

TASMANIAN STATISTICAL INDICATORS

EMBARGO: 11:30AM (CANBERRA TIME) WED 10 APR 2002

C O N T E N T S

	<i>page</i>
Notes	2
Main features	3
List of tables.	8

SUBJECT AREAS

1 Population and demography	9
2 Labour force	10
3 Wages and prices	18
4 Production	24
5 Primary industry	25
6 Building	29
7 Finance	30
8 Tourism	32
9 Transport	34
10 Retail trade.	35
11 Overseas trade	36
12 Australia and State comparisons.	38
13 Tasmanian Statistical Divisions comparisons.	40

ADDITIONAL INFORMATION

Map: Tasmanian Statistical Divisions.	42
---	----

- For further information about these and related statistics, contact the National Information and Referral Service on 1300 135 070 or Mary Eagle on Hobart 03 6222 5812.

NOTES

FORTHCOMING ISSUES

<i>ISSUE</i>	<i>RELEASE DATE</i>
May 2002	8 May 2002
June 2002	11 June 2002
July 2002	10 July 2002
August 2002	8 August 2002
September 2002	10 September 2002
October 2002	10 October 2002

INTRODUCTION

1 This publication contains latest figures for a comprehensive range of economic indicators. Statistics shown in this publication are the latest available at the date of preparation and may be subject to revision in subsequent issues. Reference should therefore always be made to the latest issue or to the statistical publication on the specific subject.

SEASONAL ADJUSTMENT AND TREND ESTIMATION

2 Seasonal adjustment is a means of removing the estimated effects of normal seasonal variation from the series so that the effects of other influences on the series can be more clearly recognised. Seasonal adjustment does not aim to remove the irregular or non-seasonal influences which may be present in any particular month. This means that month-to-month movements of the seasonally adjusted estimates may not be reliable indicators of trend behaviour.

3 The smoothing of seasonally adjusted series reduces the impact of the irregular components of the seasonally adjusted series and creates trend estimates. These trend estimates are derived by applying a 13-term Henderson-weighted moving average to all months except the last six. The last six monthly trend estimates are obtained by applying surrogates of the Henderson average to the seasonally adjusted series.

4 While this smoothing technique enables estimates to be produced for the latest month, it does result in revisions to the most recent months as additional observations become available. Generally, subsequent revisions become smaller and after three months have a negligible impact on the series.

5 ABS statistical series are being impacted by varying degrees as a result of The New Tax System (TNTS), introduced in Australia from 1 July 2000. TNTS includes the removal of Wholesale Sales Tax and the introduction of a Goods and Service Tax (GST) and as a result, a number of ABS data series will reflect significant and subsequent impacts. Further information can be found in *Information Paper: ABS Statistics and The New Tax System* (Cat. no. 1358.0).

SYMBOLS AND OTHER USAGES

n.a.	not available
n.p.	not available for separate publication (but included in totals where applicable)
n.y.a.	not yet available
. .	not applicable
—	nil or rounded to zero
p	preliminary — figure or series subject to revision
r	figure or series revised since previous issue

Stevan R. Matheson
Regional Director, Tasmania

MAIN FEATURES

THE LABOUR FORCE

Trend estimates There were an estimated 217,900 persons (based on *trend* estimates) in the labour force in February 2002 and an estimated 373,300 civilian Tasmanians aged 15 years or more, yielding a labour force participation rate of 58.4%, compared to 59.3% in February 2001. The Australian labour force participation rate for February 2002 was 63.9% compared to 63.6% in February 2001 (see table 39 and *Labour Force, Australia, Preliminary* (Cat. no. 6202.0)).

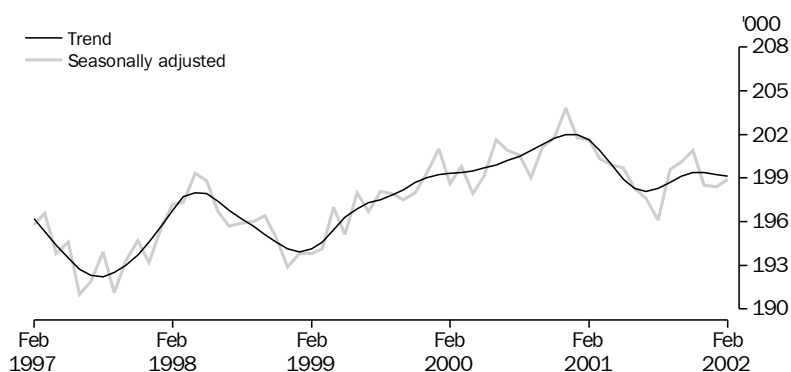
For Tasmanian males, the *trend* estimate of the participation rate was 67.2% in February 2002 compared to 68.5% in February 2001. For Tasmanian females, the *trend* estimate of the participation rate was 50.1% in February 2002, compared to 50.6% in February 2001 (see table 3).

EMPLOYMENT

State comparisons

Trend estimates There was a decrease of 1.2% in the number of Tasmanians employed over the 12 months to February 2002. Employment over the same period increased in New South Wales by 1.1%, Victoria by 0.7%, Queensland by 2.5%, South Australia by 1.8% and Western Australia by 0.9%. The increase in the national employment figure over the same period was 1.5% (see table 39 and *Labour Force, Australia, Preliminary* (Cat. no. 6202.0)).

EMPLOYED PERSONS, TASMANIA

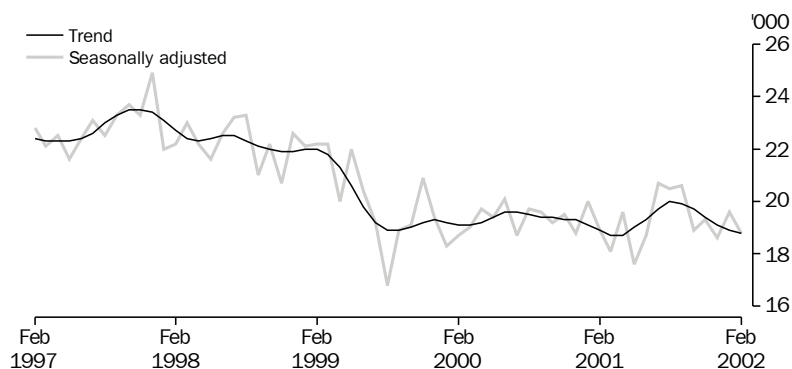


Source: ABS

UNEMPLOYMENT

Trend estimates The *trend* estimate of the number of unemployed persons in Tasmania for February 2002 was 18,800, compared to 18,900 in February 2001. The *trend* estimate of the unemployment rate for February 2002 was 8.6% and February 2001 was 8.6%. The Australian *trend* estimate of the unemployment rate was 6.7% in February 2002 compared to 6.5% in February 2001 (see table 3 and 39, and *Labour Force, Australia, Preliminary* (Cat. no. 6202.0)).

UNEMPLOYED PERSONS, TASMANIA

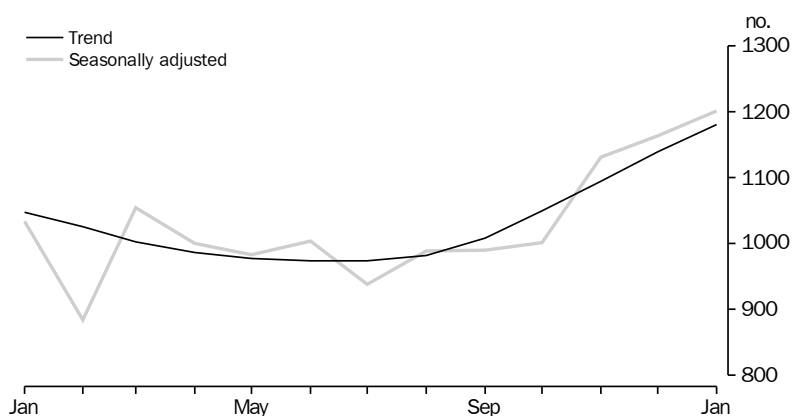


Source: ABS

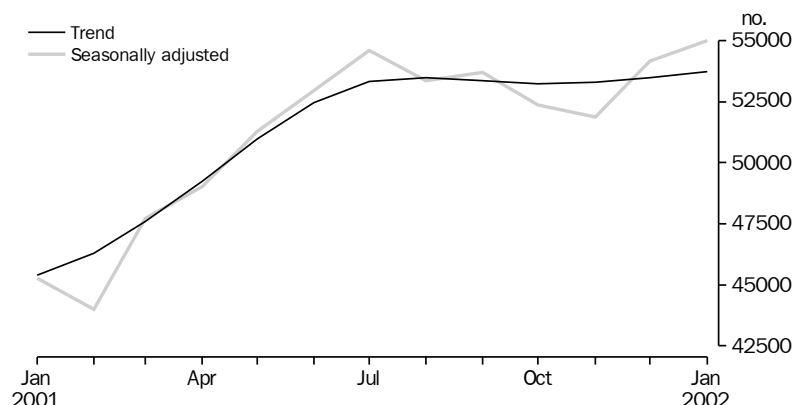
HOUSING FINANCE

Trend estimates The latest *trend* series for the number of housing finance commitments in Tasmania shows an increase of 3.7% between December 2001 and January 2002, the highest increase of all States and territories, and above the national *trend* increase of 0.5%. The Tasmanian *trend* series shows an overall increase of 12.8% between January 2001 and January 2002, compared to the national increase of 18.4%.

HOUSING FINANCE, TASMANIA, Number of Dwellings



HOUSING FINANCE AUSTRALIA, Number of dwellings



The latest *trend* series for the total value of commitments for Tasmania shows a 4.2% increase between December 2001 and January 2002, compared to the national *trend* series which increased by 0.8%. The Tasmanian *trend* series showed an increase of 37.0% from January 2001 to January 2002, similar to the national *trend* increase of 36.8%. (see table 28 and *Housing Finance for Owner Occupation, Australia* (Cat. no. 5609.0)).

BUILDING APPROVALS

Original terms

There were 280 dwelling units approved during January 2002, including 219 new houses. The number of dwelling units approved during January 2002 was 75% above the December 2001 figure of 160 and 208% above the January 2001 figure of 91. The number of dwelling units approved in the 12 months to January 2002 (1,760) rose 20.1% from those approved in the 12 months to January 2001 (1,465).

At current prices, the value of total building was \$41.4m in January 2002, 46.8% above the December 2001 figure of \$28.2m and 41.2% above the January 2001 figure of \$29.1m. Residential building contributed \$33.8m and non-residential building \$7.6m in January 2002 (see table 27 and *Building Approvals, Australia* (Cat. no. 8731.0)).

REPLACEMENT OF NEW MOTOR VEHICLE REGISTRATIONS (NMVR) STATISTICS

In *trend* terms, the number of New Motor Vehicles sold increased from 1,348 in January 2002 to 1,377 in February 2002. In the 12 months to February 2002 the estimate increased 10.1%. Nationally, the *trend* estimate increased 9.6% in the 12 months to February 2002. Passenger vehicles represented 66% of all new vehicles registered in Tasmania in February 2002.

These statistics replace the New Motor Vehicle Registrations collection. They are based on VFACTS series produced by the Federal Chamber of Automotive Industries. VFACTS reports the numbers of new motor vehicle sales by dealers and direct sales by manufacturers throughout Australia (see table 34 and *Sales of New Motor Vehicles (Available as Electronic Publication Only)* (Cat no. 9314.0)).

RETAIL

Trend estimates In *trend* terms, the estimate of retail turnover in Australia for January 2002 was \$14,003.3m, a 7.8% increase from January 2001 (\$12,991.2m). In *trend* terms, the estimate of retail turnover in Tasmania for January 2002 was \$299.8m, 4.3% above the figure recorded in January 2001 (\$287.4m) (see table 35 and *Retail Trade, Australia* (Cat. no. 8501.0)).

LIVESTOCK SLAUGHTERING

Trend estimates Monthly movements of *trend* estimates showed decreases in all three livestock slaughtering series, with cattle and calves down by 3.3%, sheep and lambs down by 13.9% and pigs down by 4.9%.

In January 2002, the *trend* estimate for the number of cattle and calves slaughtered was 16,100. This was down by 22.7% on the estimate for January 2001 and down by 30.0% on the estimate for January 2000.

The estimate for the number of sheep and lambs slaughtered was 47,800, down by 18.7% on the estimate for January 2001 and down by 43.2% on the estimate for January 2000.

The estimate for the number of pigs slaughtered was 4,370, a decrease of 8.7% on the estimate for January 2001 and a decrease of 23.4% on January 2000 (see table 21).

OVERSEAS TRADE

The value of Tasmania's exports for the month of January 2002 was \$178m, a decrease of 6% on the month of December 2001. Australia's exports for January 2002 totalled \$8,980m, a decrease of 12% on the previous month.

Tasmania's major export destinations for the month of January 2002 were Japan (\$42.6m), Korea (\$30.4 m) and Hong Kong (\$19.8m). Major commodity groups exported for the month were non-ferrous metals (\$65.4m), metal ores and scrap (\$23.1m) and fish, crustaceans and molluscs (\$15.8m).

LIST OF TABLES

1	Population	9
2	Births, deaths and marriages	9
3	Labour force status — Seasonally adjusted and trend	10
4	Labour force status by region, males	11
5	Labour force status by region, females	12
6	Labour force status by region, persons	13
7	Teenage labour market	14
8	All employed persons by occupation	15
9	Wage and salary earners, sector and industry	16
10	Average hours worked	16
11	Job vacancies	17
12	Industrial disputes	17
13	Average weekly earnings of employees — Original and trend	18
14	Indexes of total hourly rates of pay (excluding bonuses)	19
15	Summary of annual movements in wages and prices	20
16	House price index numbers	20
17	Consumer price index, Hobart and eight capital cities combined	21
18	Price index of materials used in building other than house building, Hobart	22
19	Production of selected commodities	24
20	Livestock slaughtering — Original	25
21	Livestock slaughtering — Seasonally adjusted and trend	25
22	Meat production	26
23	Principal mineral concentrates produced	26
24	Sawmills and plywood mills, logs delivered and timber produced	27
25	Chipping and grinding of wood	28
26	Logs delivered for milling or chipping	28
27	Building approvals — Original	29
28	Secured housing commitments — Original, seasonally adjusted and trend	30
29	Private new capital expenditure by type of asset — Original	30
30	Banking statistics	31
31	Accommodation establishments	32
32	National Parks, person entries	33
33	Tracks in National Parks, walker registrations	33
34	Sales of new motor vehicles	34
35	Turnover of retail establishments at current prices — Original and trend	35
36	Value of overseas trade — Tasmania and Australia	36
37	Merchandise exports by country — Original	36
38	Merchandise exports by commodity — Original	37
39	Major Statistical Indicators — Australia and State comparisons	38
40	Major Statistical Indicators — Tasmanian Statistical Divisions	40

1

POPULATION

	<i>Estimated resident population</i>	<i>Natural increase(a)</i>	<i>Net estimated migration gain</i>	<i>Total population growth</i>	<i>Annual growth rate(b)</i>
	'000	'000	'000	'000	%
1998–99	470.8	2.7	–3.6	–0.9	–0.19
1999–2000	470.3	2.1	–2.6	–0.5	–0.11
2000–01 p	470.3	2.4	–2.4	—	–0.01
1999					
September qtr	470.8	0.5	–0.5	—	–0.17
December qtr	470.8	0.5	–0.5	—	–0.16
2000					
March qtr	470.6	0.6	–0.8	–0.2	–0.10
June qtr	470.3	0.5	–0.8	–0.3	–0.11
September qtr p	470.1	0.5	–0.7	–0.2	–0.16
December qtr p	470.1	0.4	–0.4	—	–0.15
2001					
March qtr p	470.3	0.8	–0.6	0.2	–0.07
June qtr p	470.3	0.7	–0.7	—	–0.01
September qtr p	470.1	0.2	–0.3	–0.1	0.01

(a) Excess of live births registered over deaths registered (based on usual State of residence).

(b) Percentage growth from same quarter in previous year.

Source: Australian Demographic Statistics (Cat. no. 3101.0).

2

BIRTHS, DEATHS AND MARRIAGES(a)

	<i>Births</i>		<i>Deaths</i>		<i>Infant mortality(b)</i>		<i>Marriages</i>	
	<i>no.</i>	<i>rate(c)</i>	<i>no.</i>	<i>rate(d)</i>	<i>no.</i>	<i>rate(e)</i>	<i>no.</i>	<i>rate(f)</i>
1998–99	6 384	1.95	3 726	6.2	41	6.4	2 483	5.3
1999–2000	5 804	1.81	3 715	6.2	38	6.6	2 648	5.6
2000–01 p	6 263	n.y.a.	3 895	n.y.a.	32	5.1	2 448	5.2
1999								
September qtr	1 534	..	1 022	..	16	10.4	327	..
December qtr	1 447	..	929	..	8	5.5	678	..
2000								
March qtr	1 416	..	847	..	5	3.5	910	..
June qtr	1 407	..	917	..	9	6.4	733	..
September qtr p	1 405	..	954	..	6	4.3	364	..
December qtr p	1 376	..	1 012	..	8	5.8	582	..
2001								
March qtr p	1 775	..	968	..	9	5.1	791	..
June qtr p	1 707	..	961	..	9	5.3	711	..
September qtr p	1 173	..	987	..	11	9.4	346	..

(a) Usual residents of Tasmania.

(b) Deaths of children under one year of age.

(c) Total fertility rate. The sum of age specific fertility rates (live births at each age of a mother per female population of that age). It represents the number of children a woman would bear during her lifetime if she experienced age-specific fertility rates at each age of her reproductive life.

(d) Standardised death rate. The overall death rate, per 1,000 persons, that would have prevailed in a standard population if it had experienced at each age the death rates of the population being studied. The standard population used in these calculations is all persons in the 1991 Australian population.

(e) Rate per 1,000 live births.

(f) Crude marriage rate is the number of marriages registered during the financial year, per 1,000 estimated resident population at 31 December of that year.

Source: Australian Demographic Statistics (Cat. no. 3101.0).

3

LABOUR FORCE STATUS(a)—SEASONALLY ADJUSTED AND TREND

	Seasonally adjusted series(b)				Trend series(b)			
	Employed	Unemployed	Unemployment rate	Participation rate	Employed	Unemployed	Unemployment rate	Participation rate
	'000	'000	%	%	'000	'000	%	%
MALES								
2001								
February	111.4	12.8	10.3	68.6	111.6	12.2	9.9	68.5
March	111.1	11.4	9.3	67.7	111.2	12.2	9.9	68.2
April	110.2	12.8	10.4	68.0	110.5	12.1	9.9	67.8
May	110.2	11.8	9.6	67.4	109.9	12.1	9.9	67.4
June	109.9	11.8	9.7	67.2	109.4	12.3	10.1	67.2
July	109.1	12.4	10.2	67.1	109.1	12.5	10.3	67.1
August	107.1	13.0	10.8	66.3	109.0	12.7	10.4	67.2
September	109.7	13.1	10.7	67.8	109.2	12.7	10.4	67.3
October	109.9	12.4	10.1	67.5	109.5	12.6	10.3	67.4
November	110.6	12.7	10.3	68.0	110.0	12.2	10.0	67.4
December	109.7	11.5	9.5	66.9	110.3	11.8	9.7	67.4
2002								
January	110.8	11.4	9.3	67.4	110.6	11.4	9.3	67.3
February	110.6	10.5	8.6	66.8	110.8	11.0	9.0	67.2
FEMALES								
2001								
February	90.2	6.2	6.4	50.4	90.0	6.7	6.9	50.6
March	89.2	6.7	7.0	50.1	89.7	6.6	6.8	50.4
April	89.7	6.8	7.1	50.5	89.3	6.6	6.9	50.2
May	89.5	5.9	6.2	49.9	89.0	6.8	7.1	50.1
June	88.5	6.9	7.3	49.8	88.9	7.1	7.4	50.2
July	88.4	8.3	8.5	50.5	89.1	7.3	7.5	50.3
August	89.0	7.5	7.8	50.4	89.3	7.3	7.6	50.4
September	89.9	7.6	7.7	50.8	89.5	7.2	7.5	50.5
October	90.1	6.5	6.7	50.4	89.6	7.1	7.4	50.5
November	90.3	6.6	6.8	50.5	89.4	7.2	7.4	50.4
December	88.8	7.0	7.3	50.0	89.1	7.3	7.6	50.2
2002								
January	87.6	8.2	8.5	49.9	88.7	7.6	7.8	50.1
February	88.3	8.4	8.6	50.3	88.3	7.9	8.2	50.1
PERSONS								
2001								
February	201.6	18.9	8.6	59.3	201.6	18.9	8.6	59.3
March	200.3	18.1	8.3	58.7	200.9	18.7	8.5	59.0
April	199.9	19.6	8.9	59.0	199.9	18.7	8.6	58.7
May	199.7	17.6	8.1	58.4	198.9	19.0	8.7	58.5
June	198.3	18.7	8.6	58.3	198.3	19.3	8.9	58.4
July	197.6	20.7	9.5	58.6	198.1	19.7	9.1	58.5
August	196.1	20.5	9.5	58.1	198.3	20.0	9.1	58.6
September	199.6	20.6	9.4	59.1	198.7	19.9	9.1	58.7
October	200.1	18.9	8.6	58.7	199.1	19.7	9.0	58.7
November	200.9	19.3	8.8	59.0	199.4	19.4	8.9	58.7
December	198.5	18.6	8.6	58.2	199.4	19.1	8.8	58.6
2002								
January	198.4	19.6	9.0	58.4	199.2	18.9	8.7	58.5
February	198.9	18.8	8.6	58.3	199.1	18.8	8.6	58.4

(a) For explanation of terms and concepts, refer to *Labour Force, Australia, Preliminary* (Cat. no. 6202.0). At April 2001, estimates for prior periods were revised because of some minor definitional changes.

(b) Seasonal factors are reviewed annually to take account of each additional year's data. The results of the review are used to compile revised seasonally adjusted and trend estimates each February. Trend estimates for the most recent months are also revised each month; see Notes on page 2.

Source: *Labour Force, Australia, Preliminary* (Cat. no. 6202.0).

4

LABOUR FORCE STATUS BY REGION—MALES(a)(b)

	<i>Total employed</i>	<i>Total unemployed</i>	<i>Unemployment rate</i>	<i>Participation rate</i>
	'000	'000	%	%
HOBART AND SOUTHERN STATISTICAL DIVISIONS				
2000				
February	51.9	5.4	9.4	65.6
2001				
February	51.3	7.2	12.3	66.8
December	52.5	5.4	9.3	66.7
2002				
January	51.5	5.7	9.9	65.7
February	50.9	5.0	9.0	64.5
NORTHERN STATISTICAL DIVISION				
2000				
February	31.6	2.9	8.5	67.2
2001				
February	36.8	3.4	8.4	72.9
December	33.7	3.4	9.2	69.9
2002				
January	32.1	4.0	11.0	70.1
February	34.0	3.5	9.4	70.4
MERSEY-LYELL STATISTICAL DIVISION				
2000				
February	26.4	3.3	11.0	71.4
2001				
February	22.9	3.3	12.7	68.5
December	25.7	3.1	10.8	69.5
2002				
January	27.0	2.8	9.4	69.5
February	25.5	2.6	9.4	68.0
TASMANIA				
2000				
February	109.9	11.5	9.5	67.4
2001				
February	111.0	13.9	11.1	69.0
December	111.8	11.9	9.6	68.3
2002				
January	110.6	12.4	10.1	67.9
February	110.3	11.2	9.2	67.0

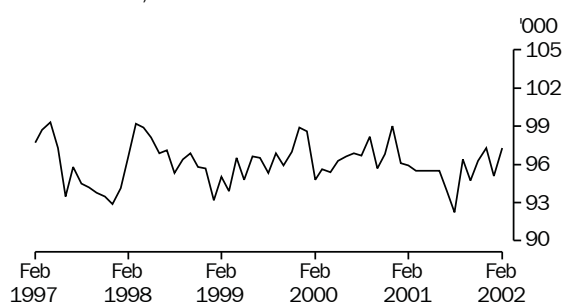
(a) For explanation of terms and concepts, refer to *Labour Force, Australia* (Cat. no. 6203.0).

(b) Data in this table are original series, i.e. they are not part of a seasonally adjusted or a trend series. Accordingly, care should be exercised when using these data.

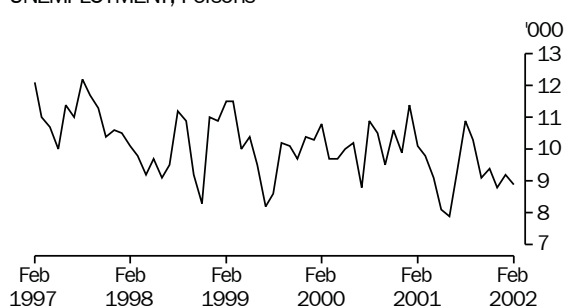
Source: *Labour Force, Selected Summary Tables, Australia* (Cat. no. 6291.0.40.001).

Hobart and Southern Statistical Divisions (see table 6)

EMPLOYMENT, Persons



UNEMPLOYMENT, Persons



5

LABOUR FORCE STATUS BY REGION—FEMALES(a)(b)

	<i>Total employed</i>	<i>Total unemployed</i>	<i>Unemployment rate</i>	<i>Participation rate</i>
	'000	'000	%	%
HOBART AND SOUTHERN STATISTICAL DIVISIONS				
2000				
February	42.9	5.5	11.3	51.3
2001				
February	44.6	2.9	6.1	51.0
December	44.9	3.5	7.2	52.1
2002				
January	43.6	3.6	7.6	50.5
February	43.9	3.8	8.1	51.2
NORTHERN STATISTICAL DIVISIONS				
2000				
February	25.0	1.6	6.1	48.5
2001				
February	26.8	2.3	8.0	51.9
December	27.1	1.9	6.5	51.6
2002				
January	24.3	3.1	11.2	49.5
February	26.3	2.7	9.2	53.0
MERSEY-LYELL STATISTICAL DIVISIONS				
2000				
February	19.6	1.6	7.3	51.8
2001				
February	17.7	1.7	8.7	46.6
December	18.5	1.4	7.3	46.5
2002				
January	17.8	1.9	9.5	45.7
February	17.7	2.0	10.1	44.5
TASMANIA				
2000				
February	87.5	8.6	9.0	50.6
2001				
February	89.2	6.9	7.2	50.3
December	90.4	6.8	7.0	50.7
2002				
January	85.8	8.5	9.0	49.1
February	87.9	8.5	8.8	50.2

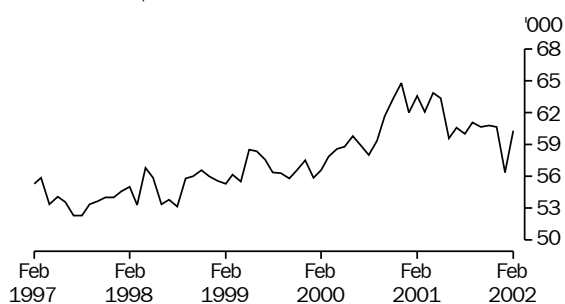
(a) For explanation of terms and concepts, refer to *Labour Force, Australia* (Cat. no. 6203.0).

(b) Data in this table are original series, i.e. they are not part of a seasonally adjusted or a trend series. Accordingly, care should be exercised when using these data.

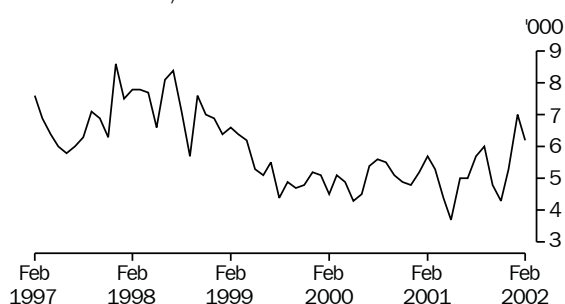
Source: *Labour Force, Selected Summary Tables, Australia* (Cat. no. 6291.0.40.001).

Northern Statistical Division (see table 6)

EMPLOYMENT, Persons



UNEMPLOYMENT, Persons



6

LABOUR FORCE STATUS BY REGION—PERSONS(a)(b)

	<i>Total employed</i>	<i>Total unemployed</i>	<i>Unemployment rate</i>	<i>Participation rate</i>
	'000	'000	%	%
HOBART AND SOUTHERN STATISTICAL DIVISIONS				
2000				
February	94.8	10.8	10.2	58.2
2001				
February	95.9	10.1	9.5	58.6
December	97.3	8.8	8.3	59.1
2002				
January	95.1	9.2	8.9	57.8
February	94.7	8.9	8.6	57.6
NORTHERN STATISTICAL DIVISION				
2000				
February	56.6	4.5	7.4	57.6
2001				
February	63.6	5.7	8.2	62.3
December	60.7	5.3	8.0	60.5
2002				
January	56.4	7.0	11.1	59.4
February	60.3	6.2	9.3	61.6
MERSEY-LYELL STATISTICAL DIVISION				
2000				
February	46.0	4.8	9.5	61.7
2001				
February	40.6	5.0	11.0	57.1
December	44.2	4.6	9.4	57.8
2002				
January	44.8	4.7	9.4	57.6
February	43.2	4.6	9.7	55.9
TASMANIA				
2000				
February	197.5	20.2	9.3	58.8
2001				
February	200.1	20.8	9.4	59.4
December	202.2	18.7	8.5	59.2
2002				
January	196.4	20.9	9.6	58.2
February	198.2	19.7	9.0	58.4

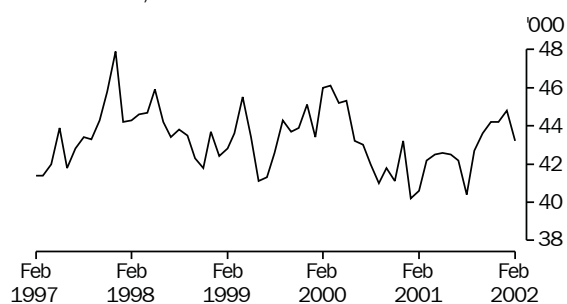
(a) For explanation of terms and concepts, refer to *Labour Force, Australia* (Cat. no. 6203.0).

(b) Data in this table are original series, i.e. they are not part of a seasonally adjusted or a trend series. Accordingly, care should be exercised when using these data.

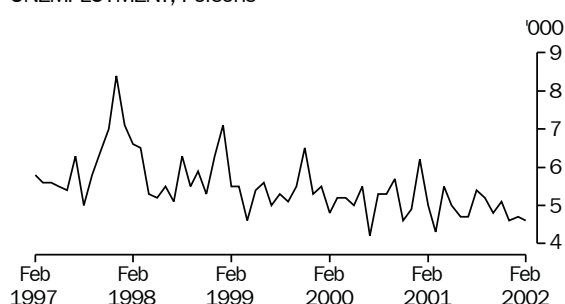
Source: *Labour Force, Selected Summary Tables, Australia* (Cat. no. 6291.0.40.001).

Mersey-Lyell Statistical Division (see table 6)

EMPLOYMENT, Persons



UNEMPLOYMENT, Persons



7

TEENAGE LABOUR MARKET(a)

	<i>Employed</i>		<i>Unemployed</i>		<i>Labour force</i>	<i>Not in labour force</i>	<i>Civilian population aged 15–19</i>	<i>Unemployment rate</i>	<i>Unemployment population ratio</i>	<i>Participation rate</i>
	<i>Full-time</i>	<i>Total</i>	<i>Looking for full-time work</i>	<i>Total</i>						
	'000	'000	'000	'000	'000	'000	'000	%	%	%
ATTENDING NEITHER A SCHOOL NOR A TERTIARY INSTITUTION FULL-TIME										
2000										
February	5.4	7.3	2.4	2.5	9.8	1.8	11.6	25.1	21.2	84.6
2001										
February	6.4	8.9	1.8	2.0	10.9	1.0	11.9	18.5	16.9	91.7
December	6.7	10.0	2.0	2.1	12.1	3.2	15.3	17.5	13.8	79.2
2002										
January	6.5	9.2	2.2	2.5	11.7	2.5	14.2	21.0	17.3	82.1
February	5.9	9.0	1.9	2.1	11.1	2.3	13.3	18.6	15.4	83.0
ATTENDING SCHOOL OR A TERTIARY INSTITUTION FULL-TIME										
2000										
February	0.9	8.6	0.7	2.0	10.6	12.6	23.2	18.8	8.6	45.8
2001										
February	0.7	7.4	1.4	2.5	9.9	12.8	22.7	25.5	11.1	43.5
December	1.3	5.9	0.4	1.9	7.8	11.2	18.9	24.5	10.0	41.0
2002										
January	0.6	6.0	1.0	3.4	9.3	10.7	20.0	36.0	16.8	46.6
February	0.5	6.0	0.5	2.3	8.3	12.6	20.8	27.7	11.0	39.7
TOTAL										
2000										
February	6.3	16.0	3.1	4.5	20.4	14.4	34.8	21.8	12.8	58.7
2001										
February	7.1	16.2	3.2	4.5	20.8	13.8	34.6	21.8	13.1	60.1
December	8.0	15.9	2.3	4.0	19.9	14.4	34.2	20.2	11.7	58.0
2002										
January	7.1	15.2	3.2	5.8	21.0	13.2	34.2	27.7	17.0	61.4
February	6.5	15.0	2.4	4.3	19.3	14.8	34.2	22.5	12.7	56.6

(a) Persons aged 15–19 years. For explanation of terms and concepts, refer to *Labour Force, Australia* (Cat. no. 6203.0). Care should be exercised when using these series as some estimates are subject to high sampling variability.

Source: ABS data available on request, *Labour Force, Estimates; Labour Force, Teenage Employment and Unemployment, Australia, Preliminary, Data Report* (Cat. no. 6202.0.40.001).

	February 2001			February 2002		Proportion of total employed	
	Persons	Males	Females	Persons		February 2001	February 2002
	'000	'000	'000	'000		%	%
Managers and administrators							
Generalist managers	2.3	1.7	0.4	2.1		1.1	1.1
Specialist managers	4.1	4.6	0.6	5.3		2.0	2.7
Farmers and farm managers	6.5	4.3	1.2	5.5		3.2	2.8
Total	12.9	10.6	2.2	12.8		6.4	6.5
Professionals							
Science, building and engineering professionals	4.4	4.4	0.5	4.9		2.2	2.5
Business and information professionals	5.6	3.9	1.6	5.6		2.8	2.8
Health professionals	7.8	2.3	5.6	7.9		3.9	4.0
Education professionals	7.0	2.9	5.3	8.1		3.5	4.1
Social, arts and miscellaneous professionals	5.6	3.0	2.3	5.3		2.8	2.7
Total	30.5	16.4	15.4	31.8		15.2	16.0
Associate professionals							
Science, engineering and related associate professionals	2.8	2.7	0.5	3.3		1.4	1.7
Business and administration associate professionals	4.4	3.0	3.4	6.4		2.2	3.2
Managing supervisors (sales and service)	10.6	5.5	3.2	8.8		5.3	4.4
Health and welfare associate professionals	1.2	0.5	1.5	2.0		0.6	1.0
Other associate professionals	4.1	2.4	2.3	4.7		2.0	2.4
Total	21.8	13.7	9.5	23.1		10.9	11.7
Tradespersons and related workers							
Mechanical and fabrication engineering tradespersons	5.5	5.3	—	5.3		2.7	2.7
Automotive tradespersons	2.2	2.6	0.2	2.8		1.1	1.4
Electrical and electronics tradespersons	4.2	3.7	—	3.7		2.1	1.9
Construction tradespersons	4.8	4.7	—	4.7		2.4	2.4
Other tradespersons and related workers	9.4	5.3	2.4	7.7		4.7	3.9
Total	26.1	21.5	2.6	24.1		13.0	12.2
Advanced clerical and service workers							
Secretaries and personal assistants	2.4	0.2	2.0	2.2		1.2	1.1
Other advanced clerical and service workers	2.7	1.0	2.4	3.4		1.3	1.7
Total	5.1	1.2	4.4	5.5		2.5	2.8
Intermediate clerical, sales and service workers							
Intermediate clerical workers	24.1	3.5	16.5	20.0		12.0	10.1
Intermediate sales and related workers	3.9	2.7	0.9	3.6		1.9	1.8
Intermediate service workers	13.3	2.8	10.0	12.8		6.6	6.5
Total	41.3	8.9	27.4	36.3		20.6	18.3
Intermediate production and transport workers							
Intermediate plant operators	6.2	6.1	0.2	6.3		3.1	3.2
Intermediate machine operators	2.6	1.3	0.5	1.8		1.3	0.9
Road and rail transport drivers	6.8	5.6	0.2	5.8		3.4	2.9
Other intermediate production and transport workers	3.5	2.9	0.3	3.2		1.7	1.6
Total	19.1	15.9	1.1	17.1		9.5	8.6
Elementary clerical, sales and service workers							
Elementary clerks	1.4	0.9	1.0	1.9		0.7	1.0
Elementary sales workers	19.9	6.0	13.3	19.3		9.9	9.7
Elementary service workers	2.4	1.1	0.9	2.1		1.2	1.1
Total	23.6	8.0	15.3	23.3		11.8	11.8
Labourers and related workers							
Cleaners	6.0	2.1	4.6	6.7		3.0	3.4
Factory labourers	4.5	3.8	1.4	5.1		2.2	2.6
Other labourers and related workers	9.1	8.2	4.1	12.3		4.5	6.2
Total	19.6	14.1	10.0	24.1		9.8	12.2
Total employed	200.1	110.3	87.9	198.2		100.0	100.0

(a) For explanation of terms and concepts, refer to *Labour Force, Australia* (Cat. no. 6203.0).Source: ABS data available on request, *Labour Force Estimates*.

9

WAGE AND SALARY EARNERS, SECTOR AND INDUSTRY(a)

	Employees, August 2001			Percentage distribution	
	Private	Public	Total	August 2000	August 2001
	'000	'000	'000	%	%
Agriculture, forestry & fishing	n.a.	0.6	0.6	0.4	0.4
Mining	1.6	—	1.6	1.0	1.0
Manufacturing	n.p.	n.p.	18.4	12.0	11.1
Electricity, gas & water supply	—	1.9	1.9	1.2	1.1
Construction	5.6	0.2	5.9	3.5	3.6
Wholesale trade	8.9	—	8.9	4.5	5.4
Retail trade	25.5	—	25.5	17.7	15.4
Accommodation, cafes & restaurants	9.3	—	9.3	6.6	5.6
Transport & storage	5.9	0.9	6.9	3.5	4.2
Communication services	n.p.	n.p.	2.4	1.7	1.4
Finance and insurance	4.9	0.2	5.2	3.2	3.1
Property & business services	12.9	0.5	13.3	6.4	8.0
Government administration and defence	—	10.0	10.0	5.4	6.0
Education	3.2	15.0	18.3	11.6	11.1
Health and community services	14.5	8.7	23.2	14.4	14.0
Cultural and recreational services	4.4	1.0	5.4	2.4	3.3
Personal and other services	6.3	2.8	9.1	4.4	5.5
Total all industries	122.2	43.4	165.6	100.0	100.0

(a) For explanation of terms and concepts, refer to *Wage and Salary Earners, Australia* (Cat. no. 6248.0).

Source: *Wage and Salary Earners, Australia* (Cat. no. 6248.0).

10

AVERAGE HOURS WORKED

	Average weekly total hours worked, all employed persons(a)		
	Males	Females	Persons
2000			
November	39.5	27.6	34.2
2001			
February	38.5	26.2	33.0
May	40.4	27.3	34.5
August	38.0	27.3	33.1
November	37.9	27.2	33.1
2002			
February	37.3	25.1	31.9

(a) For explanation of terms and concepts, refer to *Labour Force, Australia* (Cat. no. 6203.0).

Source: ABS data available on request; Labour Force Survey.

11

JOB VACANCIES(a)(b)

	no.	rate(c)
	'000	%
2000		
August	2.5	1.5
November	1.9	1.1
2001		
February	2.1	1.2
May	1.4	0.9
August	1.1	0.7
November	1.5	0.9

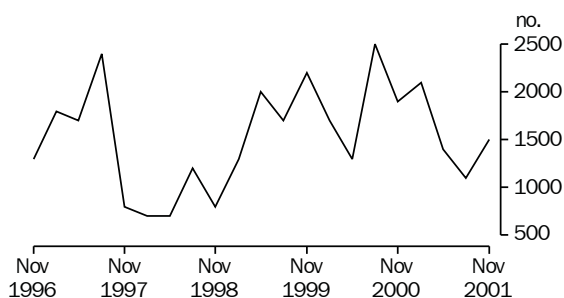
(a) For explanation of terms and concepts, refer to *Job Vacancies, Australia* (Cat. no. 6354.0).

(b) Care should be exercised in using these series as some estimates are subject to high sampling variability.

(c) Job vacancies expressed as a percentage of the number of employees plus job vacancies.

Source: *Job Vacancies, Australia* (Cat. no. 6354.0).

JOB VACANCIES, TASMANIA



12

INDUSTRIAL DISPUTES(a)

	Working days lost '000	Twelve months ended	Working days lost per thousand employees
2000			
December	0.2	December	7
2001			
January	—	January	6
February	—	February	6
March	—	March	5
April	0.1	April	4
May	—	May	3
June	0.1	June	3
July	0.2	July	4
August	—	August	4
September	—	September	3
October	—	October	3
November	—	November	3
December	0.9	December	7
Twelve months ended			
December 2001	1.2

(a) For explanation of terms and concepts, refer to *Industrial Disputes, Australia* (Cat. no. 6321.0).

Source: *Industrial Disputes, Australia* (Cat. no. 6321.0).

	Males			Females			Persons		
	<i>Full-time adult ordinary time earnings</i>	<i>Full-time adult total earnings</i>	<i>All males total earnings</i>	<i>Full-time adult ordinary time earnings</i>	<i>Full-time adult total earnings</i>	<i>All females total earnings</i>	<i>Full-time adult ordinary time earnings</i>	<i>Full-time adult total earnings</i>	<i>All employees total earnings</i>
ORIGINAL									
2000									
August	784.2	819.6	677.6	645.4	660.9	422.9	736.6	765.1	547.4
November	784.6	824.7	683.2	663.4	685.1	431.0	741.3	774.8	549.5
2001									
February	786.2	819.5	678.0	676.9	688.8	462.0	745.8	771.2	568.4
May	788.7	820.9	685.2	691.3	704.1	462.9	755.9	781.5	576.6
August	789.2	821.9	688.5	701.1	717.7	474.1	758.1	785.2	581.9
November	812.0	848.8	720.6	717.4	735.8	457.3	778.7	809.0	584.2
TREND(b)									
2000									
August	786.6	825.2	687.8	650.3	667.9	428.5	739.3	770.4	553.5
November	785.5	823.0	680.3	660.2	676.2	435.3	740.7	770.7	553.1
2001									
February	784.0	817.8	675.8	675.3	689.9	452.4	744.6	771.8	562.3
May	788.9	821.4	684.4	691.8	706.5	465.6	754.8	781.0	575.3
August	796.7	830.7	699.8	704.7	720.7	469.3	765.5	792.8	584.5
November	806.0	842.6	716.6	714.1	731.7	465.9	775.7	805.1	589.2

(a) For explanation of terms and concepts, refer to *Average Weekly Earnings, Australia* (Cat. no. 6302.0).

(b) ABS trend estimates for the most recent months are revised, see Notes on page 2.

Source: *Average Weekly Earnings, Australia* (Cat. no. 6302.0).

	Index numbers				Percentage change	
	Mar qtr 2001	Jun qtr 2001	Sep qtr 2001	Dec qtr 2001	Jun qtr 2001 to Sep qtr 2001	Sep qtr 2001 to Dec qtr 2001
SELECTED INDUSTRIES(c)						
Manufacturing	109.2	109.9	111.1	111.8	1.1	0.6
Retail trade	109.1	109.5	110.7	111.2	1.1	0.5
Government administration and defence	107.9	108.9	110.2	111.1	1.2	0.8
Education	111.4	114.2	114.6	114.7	0.4	0.1
Health and community services	107.7	108.6	109.8	110.4	1.1	0.5
All industries(d)	109.5	110.3	111.5	112.1	1.1	0.5
SELECTED OCCUPATIONS						
Professionals	110.4	111.8	113.0	113.4	1.1	0.4
Associate professionals	110.2	110.7	111.7	112.3	0.9	0.5
Tradespersons & related workers	109.0	109.1	110.7	111.2	1.5	0.5
Intermediate clerical, sales & service workers	108.9	110.2	111.1	111.8	0.8	0.6
Intermediate production & transport workers	109.1	110.0	111.1	111.7	1.0	0.5
Elementary clerical, sales & service workers	111.3	112.1	112.9	113.0	0.7	0.1
Labourers & related workers	108.5	109.4	110.0	111.1	0.5	1.0
All occupations	109.5	110.3	111.5	112.1	1.1	0.5

(a) Base of each index: September quarter 1997 = 100.0.

(b) These indexes are a measure of quarterly changes in wage and salary costs for employee jobs. They are one of four sets of indexes that together comprise the Wage Cost Index. For explanation of terms and concepts, refer to *Wage Cost Index, Australia* (Cat. no. 6345.0).

(c) Industry is shown at the ANZSIC division level for selected divisions.

(d) Excludes Agriculture, forestry and fishing.

Source: ABS data available on request; Wage Cost Index.

15

SUMMARY OF ANNUAL MOVEMENTS IN WAGES AND PRICES(a), PERCENTAGE CHANGE FROM PREVIOUS YEAR—ORIGINAL

	<i>CPI all groups—Hobart</i>	<i>Price index of materials used in house building all groups—Hobart</i>	<i>Price index of materials used in building other than house building all groups—Hobart</i>	<i>Average weekly total earnings, full-time adult employees(b)</i>
	%	%	%	%
1998–99	1.0	1.0	0.9	2.4
1999–2000	1.9	1.3	0.4	2.5
2000–01	5.8	1.8	0.3	3.2
1999				
December	1.1	0.2	–0.2	2.3
2000				
March	2.6	2.0	0.6	0.6
June	3.3	3.4	1.2	6.5
September	6.5	(c)2.5	(c)–0.5	5.4
December	5.8	2.4	0.6	3.1
2001				
March	5.4	1.4	0.8	2.7
June	5.5	0.8	0.3	1.7
September	1.1	1.7	2.0	2.6
December	2.1	1.6	1.2	—

(a) See note 5 on page 2 of this issue on the impacts of The New Tax System (TNTS).

(b) March, June, September and December data relates to February, May, August and November survey dates as published in *Average Weekly Earnings, Australia* (Cat. no. 6302.0).

(c) This quarter affected by the removal of the Wholesale Sales Tax from 1 July 2000.

Source: ABS data available on request; *Producer Price Index* (Cat. no. 6427.0); *Consumer Price Index, Australia* (Cat. no. 6401.0); *Average Weekly Earnings, Australia* (Cat. no. 6302.0).

16

HOUSE PRICE INDEX NUMBERS(a)(b)

	<i>Established house price index</i>		<i>Project home price index</i>	
	<i>Index</i>	<i>% change(c)</i>	<i>Index</i>	<i>% change(c)</i>
1998–99	123.2	–1.8	123.3	—
1999–2000	129.0	4.7	126.2	2.4
2000–01	134.2	4.0	140.7	11.5
1999				
December	127.8	2.0	125.4	1.1
2000				
March	128.6	0.6	127.5	1.7
June	134.2	4.4	127.9	0.3
September	134.3	0.1	(d)140.3	(d)9.7
December	133.7	–0.4	140.3	—
2001				
March	133.8	0.1	140.5	0.1
June	135.1	1.0	141.8	0.9
September	134.9	–0.1	142.7	0.6
December	138.3	2.5	143.4	0.5

(a) Base of each Index: 1989–90 = 100.

(b) Used in calculating the mortgage interest charges component of the Consumer Price Index.

(c) Percentage change over previous period.

(d) See note 5 on page 2 of this issue on the impacts of The New Tax System (TNTS) introduced on 1 July 2000.

Source: *House Price Indexes: Eight Capital Cities* (Cat. no. 6416.0).

Hobart

	Food	Clothing and Footwear	Housing	Household furnishings, supplies and services	Transportation	Alcohol and tobacco
1998						
December	125.0	105.7	95.4	120.8	118.6	159.1
1999						
March	125.5	104.7	95.8	119.5	118.4	161.5
June	126.8	104.6	95.9	119.4	120.4	160.0
September	126.3	104.5	96.9	119.3	123.1	158.1
December	127.5	103.9	97.4	119.1	123.8	163.3
2000						
March	127.8	104.9	98.8	120.2	126.6	167.2
June	129.1	105.0	99.2	121.2	129.3	169.9
September	130.9	112.8	105.5	124.5	133.3	179.8
December	132.0	112.9	105.8	124.6	130.4	181.6
2001						
March	134.3	110.7	106.9	125.6	131.4	185.4
June	136.0	112.2	107.2	126.6	134.6	188.6
September	135.7	109.3	107.4	127.3	131.5	189.4
December	138.2	113.9	107.8	126.9	130.4	189.5

Weighted average of eight capital cities

Hobart

	Health	Education	Index, all groups	% change over previous period, all groups	Index	% change over previous period
1998						
December	187.7	190.0	122.7	-0.1	121.9	0.5
1999						
March	164.9	198.8	122.1	-0.5	121.8	-0.1
June	165.7	198.8	122.5	0.3	122.3	0.4
September	173.3	198.8	123.3	0.7	123.4	0.9
December	172.0	198.8	124.0	0.6	124.1	0.6
2000						
March	175.1	206.2	125.3	1.0	125.2	0.9
June	177.7	206.2	126.5	1.0	126.2	0.8
September	178.0	206.5	131.3	3.8	130.9	3.7
December	177.4	206.5	131.2	-0.1	131.3	0.3
2001						
March	181.5	215.1	132.1	0.7	132.7	1.1
June	181.4	215.1	133.4	1.0	133.8	0.8
September	180.3	215.0	132.8	-0.4	134.2	0.3
December	180.5	215.0	133.9	0.8	135.4	0.9

(a) Base year: 1989-90 = 100.

(b) Further information on construction of CPI indexes is contained in the bulletin *Australian Consumer Price Index Concepts, Sources and Methods* (Cat. no. 6461.0).(c) As a result of the introduction of the 14th Series Australian CPI there have been changes to some groups and restructuring of some others. See Appendix A4 of the September quarter issue of *Consumer Price Index, Australia* (Cat. no. 6401.0) for more information.

(d) See note 5 on page 2 of this issue on the impacts of The New Tax System (TNTS) introduced on 1 July 2000.

Source: *Consumer Price Index, Australia* (Cat. no. 6401.0).

Index numbers for selected major building materials

	<i>Structural timber</i>	<i>Clay bricks</i>	<i>Ready mixed concrete</i>	<i>Precast concrete products</i>	<i>Steel decking, cladding etc.</i>	<i>Structural steel</i>
1998-99	109.1	130.8	119.5	131.6	110.8	128.0
1999-2000	114.4	129.1	118.1	131.6	109.6	128.8
2000-01	120.6	132.6	117.9	131.6	107.6	129.3
1999						
December	111.7	126.9	118.0	131.6	104.6	128.8
2000						
March	116.9	130.9	117.5	131.6	110.1	128.8
June	120.7	131.6	117.5	131.6	109.8	128.8
September(b)	120.9	131.6	117.6	131.6	106.4	129.1
December	120.9	131.8	117.6	131.6	108.2	129.4
2001						
March	121.4	131.8	119.4	131.6	108.2	129.4
June	119.1	135.3	116.9	131.6	107.5	129.4
September	122.3	135.3	117.0	131.6	107.7	129.4
December	123.1	135.3	116.7	131.6	105.6	129.4

Index numbers for selected major building materials

	<i>Reinforcing steel bar, fabric and mesh</i>	<i>Aluminium windows</i>	<i>Fabricated steel products</i>	<i>Builders hardware</i>	<i>Sand and aggregate</i>	<i>Paint and other coatings</i>	<i>Non-ferrous pipes and fittings</i>
1998-99	113.4	107.3	116.0	113.4	127.9	133.3	161.2
1999-2000	110.5	108.5	114.0	116.0	144.0	133.7	168.2
2000-01	107.8	116.8	114.0	119.3	147.9	135.0	185.6
1999							
December	110.2	107.0	113.6	114.8	139.4	133.5	166.0
2000							
March	109.1	109.9	113.1	120.2	150.4	135.2	167.2
June	109.1	110.1	113.1	118.1	150.9	134.2	177.0
September(b)	107.8	110.1	113.1	117.3	145.5	131.8	177.2
December	107.9	116.6	113.0	118.8	146.1	135.7	183.8
2001							
March	107.8	120.3	116.1	119.6	151.6	136.2	193.1
June	107.8	120.3	113.9	121.4	148.4	136.2	188.1
September	107.8	120.3	113.9	123.4	147.1	137.6	183.2
December	107.9	120.3	114.4	123.6	147.4	137.4	178.1

For footnotes see end of table.

...continued

	<i>All electrical materials</i>		<i>All mechanical services</i>		<i>All plumbing materials</i>	
	<i>Index</i>	<i>% change over previous period</i>	<i>Index</i>	<i>% change over previous period</i>	<i>Index</i>	<i>% change over previous period</i>
1998–99	115.8	–1.2	119.0	1.7	124.5	2.1
1999–2000	117.6	1.6	120.3	1.1	127.0	2.0
2000–01	117.3	–0.3	118.2	–1.7	132.7	4.5
1999						
December	117.5	1.4	119.8	0.4	126.5	3.4
2000						
March	118.3	0.7	120.3	0.4	128.0	1.2
June	118.7	0.3	121.9	1.3	131.0	2.3
September(b)	115.8	–2.4	117.3	–3.8	129.1	–1.5
December	117.6	1.6	118.0	0.6	131.8	2.1
2001						
March	117.8	0.2	118.4	0.3	136.0	3.2
June	117.9	0.1	119.0	0.5	134.0	–1.5
September	118.2	0.3	119.8	0.7	131.8	–1.6
December	118.7	0.4	120.1	0.3	130.4	–1.1

	<i>All groups excluding electrical materials and mechanical services</i>		<i>All groups</i>	
	<i>Index</i>	<i>% change over previous period</i>	<i>Index</i>	<i>% change over previous period</i>
1998–99	118.8	0.7	118.5	0.9
1999–2000	119.1	0.3	119.0	0.4
2000–01	120.5	1.2	119.3	0.3
1999				
December	118.4	–0.3	118.4	–0.1
2000				
March	119.3	0.8	119.2	0.7
June	119.7	0.3	119.7	0.4
September(b)	118.8	–0.8	117.9	–1.5
December	120.1	1.1	119.1	1.0
2001				
March	121.7	1.3	120.2	0.9
June	121.3	–0.3	120.1	–0.1
September	121.2	–0.1	120.3	0.2
December	121.2	—	120.5	0.2

(a) Base year: 1989–90 = 100.

(b) This quarter affected by the removal of the Wholesale Sales Tax from 1 July 2000.

Source: ABS data available on request; Producer Price Index (Cat. no. 6427.0).

	<i>Dairy products(a)</i>			<i>Staff hours worked</i>	
	<i>Whole milk(b)</i>	<i>Factory butter(c)</i>	<i>Factory cheese</i>	<i>Textile manufacturing(d)</i>	<i>Vegetable preserving</i>
	<i>million litres</i>	<i>tonnes</i>	<i>tonnes</i>	<i>'000</i>	<i>'000</i>
1998–99	603.4	11 546	29 973	1 061	1 084
1999–2000	608.6	8 209	33 344	1 032	1 019
2000–01	589.7	5 949	32 355	938	1 037
2001					
January	62.2	277	3 383	50	65
February	49.2	387	2 665	83	97
March	44.1	484	2 607	74	94
April	41.8	377	2 847	53	90
May	40.0	290	2 490	94	119
June	23.2	409	1 722	75	85
July	15.6	231	564	88	94
August	28.8	255	1 136	94	101
September	65.4	746	4 300	83	84
October	88.8	980	3 786	93	77
November	87.0	1 026	3 933	98	91
December	84.9	664	4 408	64	99
2002					
January	n.y.a.	n.y.a.	n.y.a.	61	40
		<i>Refined zinc</i>	<i>Metallurgical refining</i>	<i>Electricity</i>	
		<i>'000 tonnes</i>	<i>Index(e)</i>	<i>million kW.h</i>	
1998–99		214.3	125.0	9 910	
1999–2000		231.7	133.2	10 050	
2000–01		233.1	138.4	10 150	
2001					
January		20.1	140.3	..	
February		18.8	136.1	..	
March		20.0	141.9	(Mar qtr) 2 360	
April		19.3	137.0	..	
May		22.3	139.9	..	
June		21.6	136.1	(Jun qtr) 2 620	
July		18.9	132.7	..	
August		20.6	137.0	..	
September		20.9	136.2	(Sep qtr) 2 710	
October		20.6	142.5	..	
November		19.4	137.2	..	
December		21.2	145.5	(Dec qtr) 2 470	
2002					
January		20.6	144.1	..	

(a) Source: Australian Dairy Corporation.

(b) Includes the whole milk equivalent of farm cream intake.

(c) Includes butter equivalent of butter oil.

(d) Includes spinning, weaving and carpet making. Reported by establishments which manufacture textiles only, or manufacture clothing and textiles in the one plant.

(e) Metallurgical refining index (Base year: 1979–80 = 100.0). Output from selected establishments covering the smelting and refining of ferro-alloys, zinc and aluminium. The weighting pattern is based on the establishments' value added as derived from the 1979–80 manufacturing Census. For multi product establishments, value added was apportioned to products on the basis of gross receipts from each product.

Source: ABS data available on request; Employees Hours Worked Survey; Monthly Production Survey; Manufacturing Survey.

20

LIVESTOCK SLAUGHTERING—ORIGINAL

	Cattle					
	Bulls, bullocks and steers	Cows and heifers	Calves	Sheep	Lambs	Pigs
	'000	'000	'000	'000	'000	'000
1998–99	94.8	116.3	61.0	439.9	480.1	81.2
1999–2000	109.0	108.9	62.1	589.9	456.3	70.1
2000–01	90.2	94.2	49.7	364.7	416.1	57.6
2000						
January	8.9	8.1	0.2	55.6	38.4	4.3
2001						
January	8.8	7.7	0.2	41.0	32.1	3.8
February	9.5	9.2	0.1	47.6	33.1	4.2
March	10.5	10.8	0.6	55.1	37.8	5.7
April	6.5	8.6	1.1	26.9	25.7	4.9
May	6.6	9.2	1.0	29.0	27.4	5.0
June	7.0	11.7	0.6	25.6	42.7	5.9
July	6.4	6.4	1.4	17.7	35.3	4.2
August	5.8	4.2	18.2	15.0	46.4	4.5
September	5.0	4.0	16.2	15.8	36.3	5.1
October	5.9	6.6	5.2	24.2	35.1	4.8
November	7.3	6.1	1.0	25.5	38.9	4.5
December	r 5.8	r 4.9	r 0.2	r 24.6	r 23.3	r 4.6
2002						
January	6.5	3.9	0.1	23.3	26.2	2.9

Source: ABS data available on request; Livestock Slaughtered.

21

LIVESTOCK SLAUGHTERING—SEASONALLY ADJUSTED(a) AND TREND(b)

	Seasonally adjusted			Trend		
	Cattle and calves	Sheep and lambs	Pigs	Cattle and calves	Sheep and lambs	Pigs
	'000	'000	'000	'000	'000	'000
2000						
January	25.3	81.6	5.9	23.1	84.1	5.7
2001						
January	22.0	59.1	4.8	20.9	58.8	4.8
February	20.7	60.3	4.7	20.7	58.7	4.8
March	21.5	68.9	4.8	20.0	58.4	4.8
April	18.3	52.9	5.2	19.0	58.0	4.7
May	16.1	54.9	4.6	18.1	58.0	4.7
June	18.0	63.9	4.6	17.5	69.6	4.6
July	17.5	65.0	4.3	17.4	73.2	4.7
August	17.9	90.5	4.4	17.6	75.6	4.8
September	16.7	78.7	5.4	17.8	74.9	4.9
October	18.9	74.3	5.2	17.6	70.3	4.9
November	18.4	65.7	5.3	17.2	63.3	4.8
December	16.4	46.4	4.4	16.7	55.5	4.6
2002						
January	14.3	39.8	3.6	16.1	47.8	4.4

(a) Seasonally adjusted factors are reviewed annually to take account of each additional year's original data. The results of the review are used to compile revised seasonally adjusted and trend estimates; see Notes page 2.

(b) ABS trend estimates for the most recent months are revised; see Notes page 2.

Source: ABS data available on request; Livestock Slaughtered.

22

MEAT PRODUCTION(a)

	<i>Beef</i>	<i>Veal</i>	<i>Mutton</i>	<i>Lamb</i>	<i>Pig meat(b)</i>	<i>Total</i>
	<i>tonnes</i>	<i>tonnes</i>	<i>tonnes</i>	<i>tonnes</i>	<i>tonnes</i>	<i>tonnes</i>
1998–99	53 271	1 241	8 724	9 222	5 242	77 700
1999–2000	57 557	1 236	11 796	8 833	4 403	83 825
2000–01	48 771	996	7 232	8 014	r 3 583	68 596
2000						
January	4 662	7	1 120	731	269	6 789
2001						
January	4 511	7	826	612	235	6 191
February	4 980	5	948	636	253	6 821
March	5 549	14	1 099	723	349	7 733
April	3 811	26	525	492	302	5 155
May	4 009	25	571	529	310	5 444
June	4 630	15	507	829	370	6 351
July	3 400	29	347	692	254	4 722
August	2 762	357	294	942	276	4 630
September	2 500	317	311	721	314	4 163
October	3 401	100	475	687	296	4 960
November	3 783	25	516	769	264	5 357
December	r 2 950	r 7	r 499	r 457	r 266	r 4 179
2002						
January	3 071	4	458	517	175	4 226

(a) Carcass weight.

(b) Includes pork used for production of bacon and ham.

Source: ABS data available on request; Livestock Slaughtered.

23

PRINCIPAL MINERAL CONCENTRATES PRODUCED

	<i>Copper</i>	<i>Iron (pellets)</i>	<i>Lead</i>	<i>Lead-zinc</i>	<i>Tin</i>	<i>Zinc</i>
	<i>'000 tonnes</i>	<i>'000 tonnes</i>	<i>'000 tonnes</i>	<i>'000 tonnes</i>	<i>'000 tonnes</i>	<i>'000 tonnes</i>
1998–99	113.5	1 816.1	101.8	12.6	12.5	382.3
1999–2000	104.3	2 068.3	98.7	7.9	14.8	311.9
2000–01	105.4	2 027.3	40.6	—	14.8	r 143.2
1999						
December	26.9	568.2	28.1	2.5	4.0	86.2
2000						
March	26.2	517.7	22.4	1.4	3.3	70.4
June	23.8	502.9	19.8	1.3	3.6	60.4
September	21.6	544.2	7.7	—	3.2	26.8
December	24.9	500.7	9.7	—	3.4	33.5
2001						
March	29.3	534.9	12.1	—	3.9	43.2
June	29.5	447.5	11.2	—	4.3	39.5
September	32.5	487.8	8.9	—	3.2	35.2
December	30.9	554.1	8.4	—	2.7	37.9

Source: Mineral Resources Tasmania, Department of Infrastructure, Energy and Resources.

	Tasmanian-grown logs delivered					Sawn, peeled and sliced timber produced(a)				
	<i>Eucalypts</i>	<i>Hardwoods, excluding eucalypts(b)</i>	<i>Plant-ation(c)</i>	<i>Native soft-woods(d)</i>	<i>Total</i>	<i>Eucalypts</i>	<i>Hardwoods, excluding eucalypts(b)</i>	<i>Plant-ation(c)</i>	<i>Native soft-woods(d)</i>	<i>Total</i>
	'000 m ³	'000 m ³	'000 m ³	'000 m ³	'000 m ³	'000 m ³	'000 m ³	'000 m ³	'000 m ³	'000 m ³
1998-99	499.9	22.6	351.9	1.0	875.4	159.7	5.1	169.7	0.3	334.8
1999-2000	510.1	28.8	396.2	0.9	936.9	169.7	5.3	190.6	0.4	366.0
2000-01	468.5	24.8	369.9	2.6	865.8	157.9	6.3	174.1	0.2	338.6
1999										
December	132.5	5.1	87.8	0.2	225.6	45.8	1.5	46.5	0.1	93.9
2000										
March	104.3	10.0	100.7	0.4	215.3	37.8	1.3	47.8	0.1	87.0
June	137.3	7.3	98.2	0.2	243.1	39.8	1.3	47.3	0.1	88.3
September	130.7	5.0	103.8	0.3	239.9	42.4	1.7	46.6	0.1	90.9
December	118.1	4.3	82.7	0.2	205.2	41.6	1.3	41.4	—	84.3
2001										
March	105.3	6.7	91.9	1.8	205.6	37.2	1.5	42.4	0.1	81.2
June	116.3	8.8	91.5	0.2	216.9	37.4	1.8	43.6	—	82.9
September	129.8	5.6	115.9	0.1	251.4	42.1	1.8	50.9	0.1	95.0
December	115.0	8.9	94.3	0.1	218.4	37.8	2.2	48.4	0.1	88.3

(a) Includes plywood, veneer and sliced timber production converted to an equivalent cubic measurement.

(b) Includes blackwood, myrtle, sassafras etc.

(c) Radiata pine.

(d) Includes Huon pine, Celery Top pine and King William pine.

Source: ABS data available on request, Forest Products Survey.

	Producing locations(d)	Materials used(c)		Chipped and ground wood production '000 tonnes green weight
		Logs delivered(e)	Sawmill offcuts	
	no.	'000 m ³	'000 m ³	
1998-99	29	3 459.6	373.4	3 929.9
1999-2000	30	4 526.8	452.5	5 145.3
2000-01	29	n.p.	n.p.	n.p.
1999				
December	30	1 103.8	96.4	1 207.3
2000				
March	30	1 152.1	104.6	1 308.7
June	30	1 214.1	117.4	1 404.0
September	31	1 259.5	104.0	1 451.7
December	30	1 328.2	120.3	1 420.6
2001				
March	30	1 177.9	89.4	1 236.4
June	29	n.p.	n.p.	n.p.
September	28	n.p.	n.p.	n.p.
December	29	n.p.	n.p.	n.p.

(a) Both hardwoods and softwoods, separate details are not available.

(b) With recent acquisitions, resulting in increased concentration of ownership in the woodchip industry, production data collected by the ABS are no longer releasable. Alternative data sources are being explored.

(c) Data reported by weight, converted to cubic measure by the factor of 0.95 m³ per tonne.

(d) Capable of producing at end of year or actually producing during quarter.

(e) Includes log equivalent of limbwood and billets.

Source: ABS data available on request, Forest Products Survey.

26

LOGS DELIVERED FOR MILLING OR CHIPPING

	Sawmilling and plywood milling			Chipping and grinding(a)(b)			Total		
	Crown land(c)	Private land	Total	Crown land(c)	Private land	Total	Crown land(c)	Private land	Total
	'000 m ³	'000 m ³	'000 m ³	'000 m ³	'000 m ³	'000 m ³	'000 m ³	'000 m ³	'000 m ³
1998-99	754.2	121.2	875.4	1 562.6	1 897.0	3 459.6	2 316.7	2 018.2	4 334.9
1999-2000	834.4	101.6	935.9	2 440.5	2 086.3	4 526.8	3 274.9	2 187.8	5 462.7
2000-01	770.6	95.2	865.8	n.p.	n.p.	n.p.	n.p.	n.p.	n.p.
1999									
December	202.5	23.1	225.6	643.1	460.7	1 103.8	845.6	483.8	1 329.4
2000									
March	192.1	23.2	215.3	585.3	566.9	1 152.1	777.3	590.1	1 367.4
June	218.0	25.1	243.1	658.1	555.9	1 214.1	876.1	581.0	1 457.1
September	219.7	20.2	239.9	729.7	529.8	1 259.5	949.4	550.1	1 499.4
December	184.3	20.9	205.2	779.7	548.5	1 328.2	964.0	569.5	1 533.5
2001									
March	181.1	24.5	205.6	651.7	526.3	1 177.9	832.8	550.8	1 383.6
June	188.4	28.5	216.9	n.p.	n.p.	n.p.	n.p.	n.p.	n.p.
September	227.6	23.8	251.4	n.p.	n.p.	n.p.	n.p.	n.p.	n.p.
December	200.7	17.9	218.6	n.p.	n.p.	n.p.	n.p.	n.p.	n.p.

(a) Logs used are generally below sawmilling standard: includes log equivalent of limbwood and billets.

(b) With recent acquisitions, resulting in increased concentration of ownership in the woodchip industry, production data collected by the ABS are no longer releasable. Alternative data sources are being explored.

(c) Comprises all areas (including concession areas) from which royalties are payable to Forestry Tasmania.

Source: ABS data available on request, ABS Forest Products Survey.

							Value(a)		
	Dwelling units				New dwelling units	Alterations and additions to residential buildings(e)	Non-residential buildings(b)		Total of all building
	New houses	New other residential buildings(c)	Other dwelling units created (conversions etc.)(d)	Total dwelling units			Private	Total	
	no.	no.	no.	no.	\$m	\$m	\$m	\$m	\$m
1998–99	1 297	104	9	1 410	131.2	36.8	115.8	174.5	342.6
1999–2000	1 608	230	55	1 893	193.4	50.7	120.7	160.6	404.7
2000–01	1 108	80	6	1 194	127.5	43.1	95.2	152.5	323.0
2001									
January	89	—	2	91	9.4	3.3	1.9	16.4	29.1
February	83	23	—	106	11.2	4.2	3.3	4.1	19.5
March	84	4	—	88	9.6	4.1	5.3	8.1	21.7
April	65	3	—	68	7.5	3.3	7.4	11.0	21.8
May	133	—	1	134	14.2	4.7	12.4	26.7	45.6
June	119	7	1	127	14.1	3.6	6.1	6.8	24.5
July	113	4	1	118	12.6	3.9	9.6	9.9	26.4
August	143	4	2	149	15.8	5.3	10.0	11.3	32.4
September	145	45	—	190	22.0	5.4	9.4	10.7	38.1
October	165	4	1	170	18.1	4.4	24.3	29.0	51.4
November	169	—	1	170	18.6	5.3	7.5	12.0	35.9
December	156	2	2	160	15.9	3.3	6.4	9.0	28.2
2002									
January	219	60	1	280	30.2	3.7	6.1	7.6	41.4

(a) Value data from July 2000 reference month onward are recorded inclusive of GST. See Cat. no. 8731.0 or page 2 of this publication for more details.

(b) Comprises non-residential building (new plus alterations and additions) valued at \$50,000 and over.

(c) New individual dwelling units (e.g. flats, home units and villa units).

(d) From alterations and additions to residential building, new or alteration and addition work on non-residential building or conversions of non-residential building to residential building.

(e) Valued at \$10,000 and over. Includes conversions and dwelling units approved as part of alterations and additions or as part of the construction of non-residential building.

Source: *Building Approvals, Australia* (Cat. no. 8731.0).

28

SECURED HOUSING COMMITMENTS—ORIGINAL, SEASONALLY ADJUSTED AND TREND

	Total number of dwellings(a)			Total value of commitments(b)		
	Original	Seasonally adjusted	Trend	Original	Seasonally adjusted	Trend
	no.	no.	no.	\$m	\$m	\$m
2001						
January	899	1 034	1 047	58	68	73
February	875	884	1 026	65	67	73
March	1 131	1 055	1 003	84	76	74
April	957	1 000	986	73	77	75
May	1 132	983	978	89	79	77
June	963	1 004	974	79	86	79
July	875	938	974	70	68	81
August	1 097	989	982	91	86	82
September	911	990	1 009	79	87	85
October	1 070	1 002	1 050	91	87	88
November	1 181	1 131	1 095	99	94	92
December	1 080	1 164	1 139	89	88	96
2002						
January	1 036	1 202	1 181	89	108	100

(a) Includes new dwellings, established dwellings and refinancing. Excludes alterations and additions.

(b) Commitment is a firm offer of housing finance. It either has been, or is normally expected to be, accepted. Includes commitments to provide housing finance to employees and commitments accepted and cancelled in the same month. Excludes alterations and additions. Includes refinancing.

Source: Housing Finance for Owner Occupation, Australia (Cat. no. 5609.0).

29

PRIVATE CAPITAL EXPENDITURE BY TYPE OF ASSET AND INDUSTRY(a)(b)(c)—ORIGINAL

	Asset			Industry			
	Buildings and structures	Equipment, plant and machinery	Total asset	Mining	Manufacturing	Other selected industries	Total all industries
	\$m	\$m	\$m	\$m	\$m	\$m	\$m
1998–99	130	345	475	48	144	283	475
1999–2000	70	385	456	53	128	275	456
2000–01	91	425	515	85	151	279	515
1999							
December	15	98	114	8	33	73	114
2000							
March	14	74	88	14	25	49	88
June	28	130	157	20	36	101	157
September	30	100	130	35	35	61	130
December	24	117	141	15	40	86	141
2001							
March	21	84	105	11	30	64	105
June	16	124	140	24	47	68	140
September	54	r 109	r 163	14	r 37	r 111	r 163
December	88	93	181	11	38	132	181

(a) Estimates based on a sample survey and therefore subject to sampling variability. Covers selected industries only — mining, manufacturing, finance, property and other selected industries.

(b) Current prices.

(c) See Cat. no. 5646.0 or page 2 of this issue on the impacts of The New Tax System (TNTS) introduced on 1 July 2000.

Source: Private New Capital Expenditure, State Estimates (Cat. no. 5646.0).

	Deposits				
	Current bearing interest	Current not bearing interest	Fixed	Investment savings accounts	Statement savings accounts
	\$m	\$m	\$m	\$m	\$m
2001					
January	1 319	296	1 243	275	248
February	1 300	273	1 236	275	249
March	1 332	295	1 243	279	251
April	1 338	296	1 132	281	255
May	1 322	287	1 214	283	266
June	1 382	289	1 106	292	275
July	1 372	283	1 267	294	284
August	1 376	260	1 228	293	293
September	1 409	260	1 235	295	302
October	1 427	269	1 235	298	311
November	1 437	274	1 193	302	310
December	1 494	299	1 241	302	320
2002					
January	1 504	292	1 236	303	322

	Deposits			Loans(b)
	Passbook/school savings accounts	Other	Total	
	\$m	\$m	\$m	
2001				
January	39	87	3 508	5 222
February	39	91	3 463	5 254
March	39	98	3 536	5 232
April	39	92	3 433	5 228
May	39	94	3 505	5 427
June	40	105	3 489	5 327
July	40	101	3 641	5 375
August	40	102	3 592	5 415
September	40	104	3 645	5 387
October	41	106	3 687	5 451
November	41	107	3 664	5 470
December	41	106	3 803	5 482
2002				
January	42	105	3 804	5 512

(a) Details are the averages of weekly figures for each month. The figures are derived from returns submitted by banks authorised under the *Banking Act* together with similar returns voluntarily submitted by the State banks; they exclude the Reserve Bank.

(b) Excludes non-resident loans.

Source: Reserve Bank of Australia.

	<i>Establish- ments</i>	<i>Guest rooms</i>	<i>Bed spaces</i>	<i>Persons employed</i>	<i>Room nights occupied</i>	<i>Room occupancy rate</i>	<i>Guest nights</i>	<i>Bed occupancy rate</i>	<i>Guest arrivals</i>	<i>Takings from accommodation(b)</i>
	<i>no.</i>	<i>no.</i>	<i>no.</i>	<i>no.</i>	<i>'000</i>	<i>%</i>	<i>'000</i>	<i>%</i>	<i>'000</i>	<i>\$'000</i>
LICENSED HOTELS WITH FACILITIES										
2000										
September qtr	54	2 909	8 023	2 842	102.5	38.3	161.4	21.9	86.1	9 739
2001										
July	n.a.	n.a.	n.a.	n.a.	30.7	34.8	47.1	19.5	25.2	2 850
August	n.a.	n.a.	n.a.	n.a.	32.1	36.4	48.1	19.9	26.7	2 959
September	n.a.	n.a.	n.a.	n.a.	35.0	41.0	56.4	24.1	30.1	3 361
September qtr	52	2 847	7 796	2 627	97.8	37.4	151.5	21.1	82.1	9 170
MOTELS AND GUEST HOUSES WITH FACILITIES										
2000										
September qtr	51	1 749	5 441	665	52.6	33.4	99.8	20.3	56.0	4 425
2001										
July	n.a.	n.a.	n.a.	n.a.	16.6	32.1	30.0	18.7	16.7	1 412
August	n.a.	n.a.	n.a.	n.a.	17.7	34.1	31.4	19.7	17.0	1 430
September	n.a.	n.a.	n.a.	n.a.	20.9	41.9	39.1	25.5	19.8	1 753
September qtr	50	1 671	5 156	647	55.2	36.0	100.5	21.2	53.4	4 595
SERVICED APARTMENTS										
2000										
September qtr	25	876	3 330	427	35.9	44.6	75.8	24.7	31.8	3 888
2001										
July	n.a.	n.a.	n.a.	n.a.	11.3	39.9	22.7	22.8	8.9	1 205
August	n.a.	n.a.	n.a.	n.a.	11.6	41.0	22.6	22.7	8.7	1 238
September	n.a.	n.a.	n.a.	n.a.	15.1	55.2	31.2	32.3	10.6	1 717
September qtr	25	910	3 214	422	37.9	45.3	76.5	25.9	28.2	4 161
TOTAL ESTABLISHMENTS										
2000										
September qtr	130	5 534	16 794	3 934	191.0	37.8	337.0	22.0	173.9	18 052
2001										
July	n.a.	n.a.	n.a.	n.a.	58.6	34.8	99.8	19.9	50.8	5 467
August	n.a.	n.a.	n.a.	n.a.	61.4	36.5	102.1	20.4	52.5	5 627
September	n.a.	n.a.	n.a.	n.a.	70.9	43.7	126.6	26.2	60.5	6 831
September qtr	127	5 428	16 166	3 696	190.9	38.3	328.5	22.1	163.7	17 926

(a) Comprising establishments with 15 or more rooms or units. For explanation of terms and concepts refer to *Tourist Accommodation, Australia* (Cat. no. 8635.0).

(b) 'Takings from accommodation' after 1 July 2000 are recorded inclusive of GST. See Cat. no. 8635.0 or page 2 of this publication for more details.

Source: *Tourist Accommodation, Australia* (Cat. no. 8635.0). For more detailed information, see *Tourist Accommodation, Small Area Data, Tasmania* (Cat. no. 8635.6.40.001).

32

NATIONAL PARKS, PERSON ENTRIES(a)

<i>Tasmanian National Park attendance</i>							
	<i>Cradle Mountain(b) (Lake Dove)</i>	<i>Lake St Clair(b) (Cynthia Bay)</i>	<i>Freycinet(b)</i>	<i>Mt Field(b)</i>	<i>Narawntapu(c) (Bakers Beach)</i>	<i>Mole Creek Karst(d) (Marakoopa Cave)</i>	<i>Maria Island(e) (Darlington)</i>
	<i>no.</i>	<i>no.</i>	<i>no.</i>	<i>no.</i>	<i>no.</i>	<i>no.</i>	<i>no.</i>
2000-01	186 000	111 800	273 000	138 700	34 300	26 788	12 820
2001							
February	20 300	15 000	36 100	15 600	3 800	2 277	1 610
March	22 900	15 700	30 800	15 000	3 500	2 397	1 691
April	22 400	11 500	24 700	15 400	2 600	2 635	1 418
May	8 900	6 100	11 500	7 200	1 500	1 102	519
June	7 200	3 300	9 300	5 600	1 400	1 394	477
July	8 700	3 000	8 500	5 500	1 600	948	96
August	5 000	2 200	8 900	7 000	1 000	1 132	280
September	10 300	5 200	12 800	6 900	1 900	2 324	843
October	12 700	7 700	20 800	8 600	2 400	2 151	870
November	16 500	8 700	23 400	9 800	3 400	2 041	946
December	22 400	10 900	34 700	15 200	r 4 400	3 647	1 367
2002							
January	35 200	19 200	49 000	24 100	6 600	4 458	2 104
February	24 400	13 900	35 300	15 900	3 900	2 235	1 782

(a) A 'person entry' occurs whenever a visitor enters a National Park. Freycinet data, in particular, reflects repeat entries. Measurement occurs at the designated sites in brackets.

(b) Estimated through a combination of traffic and booth counts.

(c) Estimated through traffic counts.

(d) Number of people taken on a guided tour.

(e) The sum of ferry arrivals only. From July 2000, excludes estimated plane passengers.

Source: Tasmanian Parks and Wildlife Service, Department of Primary Industries, Water and Environment.

33

TRACKS IN NATIONAL PARKS, WALKER REGISTRATIONS(a)

	<i>Overland(b)</i>	<i>South Coast(c)</i>	<i>Freycinet(d)</i>	<i>Port Davey(c)</i>	<i>Frenchmans Cap</i>
	<i>no.</i>	<i>no.</i>	<i>no.</i>	<i>no.</i>	<i>no.</i>
2000-01	7 273	915	3 002	208	753
2001					
February	1 267	215	414	52	167
March	1 004	82	291	30	98
April	799	47	307	10	42
May	149	4	94	5	33
June	141	2	96	1	7
July	p 127	2	81	2	7
August	p 54	3	78	3	10
September	p 128	r 4	164	r 3	16
October	p 211	22	256	2	23
November	p 654	r 71	353	r 40	25
December	p 981	231	236	29	122
2002					
January	p 1 446	314	807	50	129
February	p 1 139	p 176	359	p 51	101

(a) Numbers include only walkers who registered and represented their intention.

(b) Sum of registrations at Cradle Mt and Lake St Clair.

(c) Sum of registrations to walk the length of the track in any direction, irrespective of starting point.

(d) All overnight walkers registered in the park.

Source: Tasmanian Parks and Wildlife Service, Department of Primary Industries, Water and Environment.

	Passenger vehicles	Other vehicles	Total	Change from corresponding month of previous year
	no.	no.	no.	%
ORIGINAL				
1998–99	9 951	4 541	14 492	..
1999–2000	9 236	4 708	13 944	..
2000–01	9 944	4 693	14 637	..
2001				
February	672	385	1 057	6.8
March	746	439	1 185	7.3
April	606	308	914	–0.9
May	653	485	1 138	0.9
June	711	465	1 176	12.6
July	696	376	1 072	–8.7
August	785	392	1 177	–13.6
September	720	324	1 044	–19.3
October	851	406	1 257	6.6
November	951	476	1 427	11.5
December	1 424	449	1 873	–2.7
2002				
January	645	344	989	3.7
February	677	413	1 090	3.1
TREND				
1998–99	10 068	4 498	14 566	..
1999–2000	9 227	4 720	13 947	..
2000–01	9 803	4 694	14 497	..
2001				
February	849	402	1 251	8.7
March	824	396	1 220	8.6
April	791	387	1 178	6.2
May	755	377	1 132	1.9
June	727	372	1 099	–2.7
July	714	375	1 089	–5.9
August	722	385	1 107	–6.8
September	750	401	1 151	–5.6
October	788	417	1 205	–3.4
November	827	434	1 261	–0.5
December	860	450	1 310	3.0
2002				
January	885	463	1 348	6.5
February	903	474	1 377	10.1

(a) This table is new and replaces the Registration of New Motor Vehicles table. The Australian Bureau of Statistics is no longer collecting and disseminating statistics relating to the registration of new motor vehicles. For more information please refer to the paper *Developments in New Motor Vehicle Statistics, 2001* (Cat. no. 9313.0).

Source: Sales of New Motor Vehicles (Available as Electronic Publication Only) (Cat. no. 9314.0).

								Trend
								Total(d)
	Original	Food retailing	Clothing and soft good retailing	Household good retailing	Recreational good retailing	Hospitality and services		Change from corresponding month of previous year
	\$m	\$m	\$m	\$m	\$m	\$m	\$m	%
1998-99	3 170.1	1 352.3	185.1	337.2	200.3	434.3	3 175.3	—
1999-2000	3 278.4	1 397.9	163.3	366.1	211.0	475.1	3 254.2	2.5
2000-01	3 405.7	1 480.7	172.7	409.3	211.6	483.3	3 413.2	4.9
2001								
January	281.8	125.0	14.2	34.6	18.0	40.2	287.4	6.2
February	265.5	126.0	14.5	35.2	18.4	40.8	290.0	7.6
March	299.1	126.9	14.9	35.5	18.7	41.4	291.8	8.7
April	281.3	127.5	15.2	35.3	17.4	41.9	292.3	9.1
May	286.0	128.0	15.4	34.9	17.6	42.0	291.8	8.9
June	276.5	128.1	15.6	34.3	17.9	41.9	290.8	8.3
July	268.9	127.7	15.7	33.8	18.1	41.5	289.6	6.0
August	279.2	127.1	15.9	33.7	18.4	40.9	289.3	5.3
September	272.0	126.6	16.3	33.9	18.6	40.4	290.3	5.0
October	290.5	126.3	16.8	34.4	18.9	40.1	292.3	4.8
November	310.7	126.3	17.4	35.0	19.0	39.7	294.7	4.7
December	378.8	126.5	17.8	35.6	19.1	39.4	297.2	4.5
2002								
January	304.3	127.0	18.3	36.2	19.2	39.2	299.8	4.3

(a) Excludes motor vehicles, parts, petrol, etc.

(b) ABS retail seasonally adjusted and trend estimates for earlier periods are revised each month. See Cat. no. 8501.0 for more details.

(c) Data from July 2000 reference month onwards are recorded inclusive of GST. See Cat. no. 8501.0 and page 2 of this publication for more details.
A break in the trend series occurred between June and July 2000 because of the impact of The New Tax System on Retail turnover.

(d) Includes Department stores and Other retailing.

Source: Retail Trade, Australia (Cat. no. 8501.0).

36

VALUE OF OVERSEAS TRADE(a), TASMANIA AND AUSTRALIA

	Tasmania				Australia			
	Imports	Imports change over preceding period	Exports	Exports change over preceding period	Imports	Imports change over preceding period	Exports(b)	Exports change over preceding period
		%		%		%		%
	\$m	%	\$m	%	\$m	%	\$m	%
1998-99	407	6	2 019	-5	97 611	8	85 991	-2
1999-2000	440	8	2 215	10	110 078	13	97 286	13
2000-01	524	19	2 435	10	118 317	7	119 539	23
2001								
January	45	-18	193	-13	9 267	—	8 327	-19
February	30	-33	173	-10	8 322	-10	9 223	11
March	48	60	213	23	9 930	19	10 571	15
April	28	-42	212	—	9 574	-4	10 306	-3
May	51	82	222	5	9 979	4	10 696	4
June	34	-33	205	-8	9 510	-5	10 621	-1
July	36	7	200	-2	9 718	2	r 10 584	—
August	46	27	190	-5	10 614	9	10 492	-1
September	37	-20	170	-11	r 9 694	-9	10 621	1
October	44	21	202	19	r 11 528	19	r 10 798	2
November	52	17	185	-9	r 10 484	-9	r 10 119	-6
December	50	-3	190	3	r 9 150	-13	r 10 199	1
2002								
January	74	46	178	-6	9 370	2	8 980	-12

(a) It is difficult to get a complete picture of Tasmania's trade performance as imports recorded by the ABS include only goods imported directly into the State from overseas, and reported by the Australian Customs Service. Many of Tasmania's goods imported for direct consumption, or input into further processing industries, arrive via interstate ports, and are not included in this table.

(b) Includes re-exports.

Source: ABS data available on request, International Trade.

37

MERCHANDISE EXPORTS, BY COUNTRY—ORIGINAL

	European Community				East Asia				Total all countries
	United States of America	United Kingdom	Total European Community	Japan	Korea	Taiwan	Hong Kong	ASEAN(a)	
	\$'000	\$'000	\$'000	\$'000	\$'000	\$'000	\$'000	\$'000	
1998-99	235 787	28 691	278 037	466 626	101 177	150 071	152 533	353 441	2 019 182
1999-2000	202 831	19 228	309 082	489 037	133 553	207 233	201 348	383 690	2 214 523
2000-01	229 841	37 169	154 043	573 314	183 972	214 042	252 793	390 607	2 435 416
2001									
January	19 727	1 218	9 265	45 884	10 622	21 125	28 183	27 181	193 153
February	19 243	2 303	17 187	42 863	14 478	10 273	16 153	29 667	172 898
March	22 422	1 327	19 267	36 229	12 575	20 600	25 974	36 074	212 987
April	19 556	2 988	19 205	48 618	22 197	19 678	19 813	36 723	212 497
May	28 945	3 672	8 194	44 978	14 532	25 388	23 868	35 553	222 421
June	22 157	2 247	10 659	77 937	18 071	11 386	14 221	20 044	205 284
July	38 008	3 579	6 536	40 356	8 414	12 956	21 324	34 025	200 266
August	25 959	3 107	9 253	52 300	12 354	15 035	24 080	31 533	190 330
September	19 735	303	10 075	36 565	13 186	11 584	20 535	29 418	169 892
October	r 24 307	420	4 445	60 304	20 206	14 927	15 957	r 30 834	r 202 460
November	24 663	6 257	13 630	r 44 470	11 887	10 851	27 106	r 23 818	r 184 522
December	r 37 009	r 2 177	r 7 649	r 41 604	r 6 856	r 12 471	r 24 600	r 30 558	r 190 020
2002									
January	10 996	1 271	4 306	42 609	30 384	12 367	19 756	30 240	177 676

(a) ASEAN member countries are: Brunei, Indonesia, Laos, Malaysia, Myanmar, Philippines, Singapore, Thailand and Vietnam.

Source: ABS data available on request, International Trade.

	<i>Meat and meat preparations</i>	<i>Dairy products</i>	<i>Fish, crustaceans and molluscs</i>	<i>Vegetables and fruit</i>	<i>Wood and woodchips(a)</i>	<i>Textile fibres and wastes</i>	<i>Metallic ores and metal scrap</i>
	\$'000	\$'000	\$'000	\$'000	\$'000	\$'000	\$'000
1998–99	65 026	102 709	136 268	54 907	296 164	24 999	278 001
1999–2000	88 298	64 573	145 484	44 689	303 340	22 358	242 584
2000–01	88 773	101 006	176 737	49 788	31 816	21 248	r 242 366
2001							
January	9 339	8 678	17 464	924	2 295	1 423	12 692
February	9 101	10 076	12 292	2 850	196	722	16 369
March	8 060	8 427	17 168	7 404	4 902	5 764	20 089
April	7 573	6 069	9 736	15 171	2 114	70	18 218
May	9 299	8 684	11 835	8 761	2 450	131	25 216
June	8 240	7 336	10 439	3 562	1 877	131	32 769
July	8 153	10 429	13 218	3 150	3 177	977	17 881
August	6 753	11 563	21 281	3 229	2 416	935	9 128
September	5 598	5 918	14 068	759	2 327	1 166	10 747
October	7 229	r 6 504	13 007	1 595	2 930	951	20 125
November	6 389	r 8 821	17 591	1 090	2 899	2 010	19 147
December	r 6 151	r 6 903	r 23 145	1 317	r 6 032	1 905	r 10 913
2002							
January	5 660	8 125	15 764	1 592	1 886	1 125	23 134

	<i>Medical and pharmaceutical products</i>	<i>Paper and paperboard</i>	<i>Iron and steel</i>	<i>Non-ferrous metals</i>	<i>Road vehicles and transport equipment</i>	<i>Other and combined confidential items</i>	<i>Total all commodity groups</i>
	\$'000	\$'000	\$'000	\$'000	\$'000	\$'000	\$'000
1998–1999	52 330	4 130	95 265	544 311	173 015	192 057	2 019 182
1999–2000	67 353	9 932	10 216	681 903	213 836	319 958	2 214 523
2000–01	110 346	3 444	4 209	793 286	107 374	705 022	2 435 416
2001							
January	8 551	145	275	71 708	1 514	58 146	193 153
February	9 434	73	429	65 707	2 046	43 603	172 898
March	15 862	634	259	66 722	2 256	55 441	212 987
April	5 202	180	499	72 898	3 146	71 622	212 497
May	8 078	89	338	78 422	701	68 417	222 421
June	10 571	393	273	55 548	2 248	71 896	205 284
July	7 352	110	338	77 267	90	58 125	200 266
August	7 580	364	182	73 535	1 563	51 800	190 330
September	9 536	223	570	65 584	653	52 743	169 892
October	9 786	784	227	59 151	1 882	r 78 290	r 202 460
November	15 047	159	451	52 170	354	r 58 394	r 184 522
December	19 494	r 1 790	203	r 48 775	r 479	r 62 913	r 190 020
2002							
January	—	2 002	255	65 431	659	52 042	177 676

(a) Hardwood woodchips exports are confidential for Tasmania from June 2000.

Source: ABS data available on request, International Trade.

	NSW	Vic.	Qld	SA	WA	Tas.	Aust.(a)
Population							
Estimated resident population, September 2001 ('000) p	6 549.7	4 844.2	3 642.4	1 503.7	1 916.7	470.1	19 442.3
Proportion of Australian population, September 2001 (%) p	33.7	24.9	18.7	7.7	9.9	2.4	100.0
Population growth rate, 12 months to September 2001 (%) p	1.0	1.3	1.7	0.4	1.3	—	1.2
Labour force							
Employment growth, 12 months to February 2002 (trend series) (%)							
Males	1.4	0.6	2.9	1.8	1.9	-0.7	1.5
Females	0.8	0.9	2.0	1.9	-0.5	-1.9	1.5
Persons	1.1	0.7	2.5	1.8	0.9	-1.2	1.5
Unemployment rate (trend series), February 2002 (%)	6.2	6.5	8.0	7.1	6.5	8.6	6.7
Unemployment growth, 12 months to February 2002 (trend series) (%)	10.3	9.2	-1.6	1.2	0.5	-0.5	5.3
Participation rate (trend series), February 2002 (%)	62.6	63.8	65.2	60.7	66.5	58.4	63.9
Job vacancy rate, November 2001 (%)	1.1	1.2	1.0	1.1	0.9	0.9	1.1
Working days lost through industrial disputes, 12 months to Dec 2001 (days per '000 employees)	62	65	38	27	32	7	50
Wages and prices							
Average weekly full-time adult employees' total earnings (trend series) November 2001(\$)							
Males	1 018.10	911.70	882.00	880.50	965.50	842.60	923.10
Females	806.40	771.40	725.80	740.80	744.00	731.70	726.50
Persons	940.60	863.30	826.30	833.80	888.00	805.10	859.20
Average weekly full-time adult employees' total earnings, growth (trend), 12 months to Nov '01 (%)	7.0	5.7	4.8	4.0	3.5	4.5	5.4
Consumer price index, all groups, annual growth to December qtr 2001 (%) (b)	3.3	3.1	3.2	3.1	3.0	2.1	3.1
Building							
% change in the number of total dwelling units approved (original) in the 12 months ended January 2001, over the same period previous year	9.6	13.3	5.9	19.2	12.7	20.1	11.0
January 2001 to January 2002	31.5	30.8	38.7	76.9	47.1	207.7	36.8

For footnotes see end of table.

...continued

	NSW	Vic.	Qld	SA	WA	Tas.	Aust.(a)
Private investment and retail trade							
% change in private new capital expenditure, 12 months ended December 2001 over the same period previous year (original)	-16.2	-4.3	-12.8	-9.2	20.1	14.1	-5.1
% change in trend estimates turnover of retail establishments, January 2002 (change from corresponding month of the previous year)	6.5	9.1	5.4	9.9	12.3	4.3	7.8
Transport							
% change in number of sales of new motor vehicles in the 12 months ended February 2002 over the same period previous year, (trend)(c)	7.0	8.3	14.0	14.4	14.3	10.1	9.6
Agriculture							
% change in the number of livestock slaughtered 12 months ended January 2002 over the same period previous year (original)							
Cattle and calves	-1.9	-5.6	-13.6	-1.5	-1.0	-37.1	-7.3
Sheep and lambs	13.0	-6.8	-36.2	19.1	-36.0	-32.3	-6.1
Tourism — room occupancy rates							
Hotels, motels & guest houses, & serviced apartments with facilities, September quarter 2001 (%)	57.0	55.5	65.2	53.5	54.6	38.3	58.7
Australian National and State Accounts							
% change in Domestic (State) Final Demand(d), Chain Volume measures (trend series)							
Sep qtr 2001 to Dec qtr 2001	1.2	1.6	0.7	1.8	1.6	0.9	1.5
Dec qtr 2000 to Dec qtr 2001	1.7	5.1	5.2	5.0	6.7	3.8	4.1

(a) Australian totals include the ACT and NT, with the exception of Agriculture, which excludes both.

(b) CPI applies to State capitals.

(c) This data is new and replaces the Registration of New Motor Vehicles data. The Australian Bureau of Statistics is no longer collecting and disseminating statistics relating to the registration of new motor vehicles. For more information please refer to the paper *Developments in New Motor Vehicle Statistics, 2001* (Cat. no. 9313.0)

(d) Total of four types of expenditure: Private investment, Private consumption, Government investment, Government consumption.

		<i>Greater Hobart and Southern Statistical Divisions</i>	<i>Northern Statistical Division</i>	<i>Mersey-Lyell Statistical Division</i>	<i>Tasmania</i>
Area(a)	<i>Unit</i>	25 616	19 980	22 523	68 121
Population					
Estimated resident population, 30 June 1996	no.	230 187	134 047	110 209	474 443
Estimated resident population, 30 June 2001	no.	229 256	133 106	107 910	470 272
Births 2000(b)	no.	2 728	1 552	1 394	5 692
Deaths 2000(b)	no.	1 712	1 136	850	3 711
Labour force (original), February					
Total employed	no.	94 700	60 300	43 200	198 200
Total unemployed	no.	8 900	6 200	4 600	19 700
Unemployment rate	%	8.6	9.3	9.7	9.0
Participation rate	%	57.6	61.6	55.9	58.4
Schools, 2000(c)					
Government	no.	99	58	58	215
Non-government	no.	34	17	16	67
Full-time equivalent School students, 2000(c)					
Government					
Males	no.	15 415.8	9395.0	7 805.3	32 616.1
Females	no.	14 865.6	9 492.4	7 597.5	31 955.5
Total	no.	30 281.4	18 887.4	15 402.8	64 571.6
Non-government					
Males	no.	5 825.2	2 479.1	2 022.2	10 326.5
Females	no.	6 132.9	2 423.5	1 919.2	10 475.6
Total	no.	11 958.1	4 902.6	3 941.4	20 802.1
Educational qualification, 1996 Census(d)					
Bachelor degree or higher(e)	no.	17 058	7 152	3 908	28 184
Undergraduate diploma	no.	5 893	3 268	2 181	11 374
Associate diploma	no.	3 773	1 902	1 466	7 184
Skilled vocational	no.	16 255	10 040	8 841	35 238
Basic vocational	no.	4 548	2 632	2 305	9 515
Agriculture					
Establishments with agricultural activity, 1999–2000 season	no.	1 123	1 597	1 710	4 430
Total area of establishments	ha.	648 148	835 793	309 599	1 793 540
Crops, production, 1999–2000 season					
Potatoes	tonnes	4 197	103 197	159 778	267 172
Onions	tonnes	—	18 350	44 365	62 716
Apples	tonnes	44 900	4 592	8 044	57 537
Barley	tonnes	5 443	15 362	1 376	22 181
Livestock, 1999–2000 season					
Meat cattle	no.	49 738	162 071	198 800	410 610
Milk cattle	no.	5 053	80 396	120 552	206 000
Sheep and lambs	no.	1 351 885	1 807 545	181 248	3 340 678
Pigs	no.	1 761	11 360	4 427	17 548
Gross value of agricultural production, 1999–2000	\$m	146	258	287	691

For footnotes see end of table.

...continued

	<i>Unit</i>	<i>Greater Hobart and Southern Statistical Divisions</i>	<i>Northern Statistical Division</i>	<i>Mersey-Lyell Statistical Division</i>	<i>Tasmania</i>
Building, 2000–01					
Total dwelling units approved	no.	632	346	218	1 196
Value of total residential building approved	\$'000	91 130	47 635	31 978	170 742
Value of total building approved	\$'000	173 164	93 717	56 423	323 304
Dwellings, Census 1996					
Total dwellings	no.	98 815	57 467	45 529	201 820
Occupied private dwellings	no.	85 255	49 759	40 183	175 197
Fully owned	no.	34 338	21 563	18 359	74 260

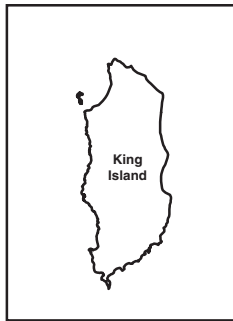
(a) Source: Department of Primary Industries, Water and Environment.

(b) Births and deaths are based on usual residence year of registration. Total Tasmania includes usual residence other than Tasmanian Statistical Divisions.

(c) Source: Department of Employment, Training and Youth Affairs and Tasmanian Department of Education.

(d) Total includes migratory statistical division.

(e) Includes higher degree, postgraduate diploma and bachelor degree.



Statistical Divisions

Statistical Division NORTHERN

Local Government Area Dorset



Based on ASGC 1996
Prepared by: Demography Section, ABS Hobart
© Commonwealth of Australia, 1998

FOR MORE INFORMATION...

- INTERNET** www.abs.gov.au the ABS web site is the best place to start for access to summary data from our latest publications, information about the ABS, advice about upcoming releases, our catalogue, and Australia Now—a statistical profile.
- LIBRARY** A range of ABS publications is available from public and tertiary libraries Australia-wide. Contact your nearest library to determine whether it has the ABS statistics you require, or visit our web site for a list of libraries.
- CPI INFOLINE** For current and historical Consumer Price Index data, call 1902 981 074 (call cost 77c per minute).
- DIAL-A-STATISTIC** For the latest figures for National Accounts, Balance of Payments, Labour Force, Average Weekly Earnings, Estimated Resident Population and the Consumer Price Index call 1900 986 400 (call cost 77c per minute).

INFORMATION SERVICE

Data which have been published and can be provided within five minutes are free of charge. Our information consultants can also help you to access the full range of ABS information—ABS user-pays services can be tailored to your needs, time frame and budget. Publications may be purchased. Specialists are on hand to help you with analytical or methodological advice.

- PHONE** **1300 135 070**
- EMAIL** **client.services@abs.gov.au**
- FAX** 1300 135 211
- POST** Client Services, ABS, GPO Box 796, Sydney 1041

WHY NOT SUBSCRIBE?

ABS subscription services provide regular, convenient and prompt deliveries of ABS publications and products as they are released. Email delivery of monthly and quarterly publications is available.

- PHONE** 1300 366 323
- EMAIL** subscriptions@abs.gov.au
- FAX** 03 9615 7848
- POST** Subscription Services, ABS, GPO Box 2796Y, Melbourne 3001



2130360004023
ISSN 1034-1803

RRP \$21.00